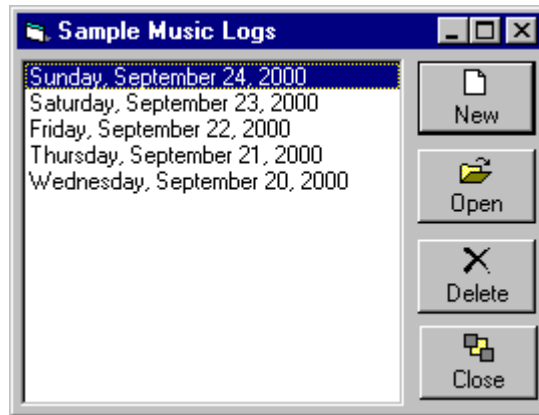


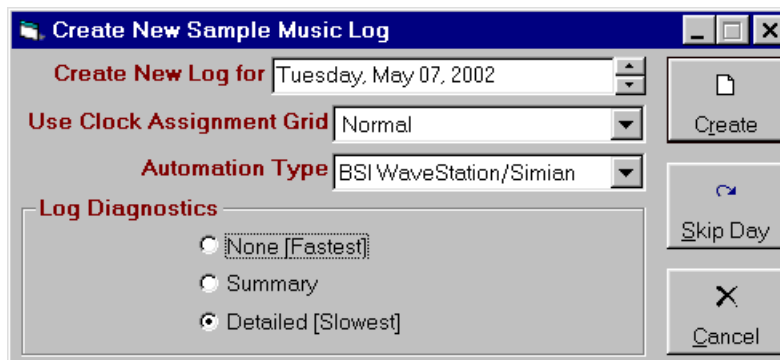
# Music Logs

At the Natural Music main screen, select **[Logs]**. This section of the Natural Music system allows you to generate and edit Music Logs. These logs can be printed for a live DJ's use or converted into Automation Logs if you are using an Automation system.



## New Music Log

Click **[New]** to generate a new Music Log for a day. These Music Logs should be generated in chronological order such as 01-01-99 then 01-02-99, etc. To skip forward or back, use the small **Up/Down** keys to the right of the log date.



If you select **Detailed** for Log Diagnostics, a diagnostic log will be saved of all songs that Natural Music attempted to place on the Music Log and which were not placed due to a rule violation. This diagnostic log is displayed during Music Log Editing and is useful for troubleshooting rule problems. In some cases, saving this diagnostic log may slightly slow down Music Log generation.

## Delete [Unschedule] Music Logs

Click **[Logs]** and select an existing Music Log. Then click **[Delete]** to unschedule an existing Music Log. This process will restore all Music Category stacks and history information to the condition existing before the Music Log was generated. Music Logs should be rejected in the reverse order that they were generated to be sure the Music Category stacks are restored to their original order.

## Send Log to Automation

In the Music Log Editor, click **[Convert][Automation Log]** to create a Log in the appropriate format for the Automation system selected in Natural Music **[Setup] [Station]**. See [Automation Interfacing](#)

# Music Log Editor

At the Natural Music main screen, select **[Logs]**. Select an existing Music Log and then click **[Open]**.

**Warning** When editing Music-Logs, NM5 warns only for Artist-Separation and Also-Protect violations because these violations may not be obvious and may stretch across several hours. For other rules, NM5 assumes the user sees surrounding songs and other violations. Play-Histories and reported violations are base on the fixed "Scheduled-Clock-Time" from your Format Clocks, not the "Estimated-Run-Time" which constantly changes as the log is edited.

**Sample Music Log Editor**

File Edit Find History Listen Print Convert-Log View Tools Help

Insert Delete Find History Listen Print Errors Help Close 6 AM Hour Music: 46:03 +00:03 No Log Errors

**Sample Music Log [Friday, May 03, 2002]**

Time	Source	Category	Title	Artist	Intro	Length	EndType	
6:00:00 AM	2059	A	Sweet Pea	Tommy Roe	08	2:04	Fade	
6:03:00 AM	1794	B	Nice To Be With You	Galley	10	2:35	Fade	
6:07:00 AM			--- 3:00 BREAK/TRAFFIC/W					
6:10:00 AM	2324	C	You'd Better Sit Down Ki	Cher		3:30	Fade	
6:13:00 AM	1557	F	It Keeps Right On A-hurt	Johnny Tillotson	10	2:48	Cold	
6:16:00 AM	1336	B	Get Together	Youngbloods	16	4:31	Cold	
6:18:00 AM	1687	E	Love Is Blue	Paul Mauriat		2:28	Cold	
6:19:00 AM			--- 3:00 BREAK					
6:22:00 AM	1353	E	Goin' Out Of My Head	Little Anthony & The Im	03	2:24	Fade	
6:25:00 AM	2825	A	You'll Lose A Good Thing	Barbara Lynn	14	2:21	Fade	
6:28:00 AM	1405	E	Hello It's Me	Todd Rundgren	12	3:40	Fade	
6:31:00 AM	1218	F	Darlin'	Beach Boys		2:07	Fade	
6:37:00 AM			--- 3:00 BREAK					
6:40:00 AM	1344	A	Gloria	Cadillacs		2:52	Cold	
6:43:00 AM	2140	B	Then You Can Tell Me (v)	Casinos	10	3:01	Cold	
6:45:00 AM	1577	F	Itsy Bitsy Teeny Weeny	Brian Hyland		2:19	Cold	
6:48:00 AM	2036	A	Sukiyaki	Kyu Sakamoto	07	3:01	Fade	
6:54:00 AM			--- 4:00 BREAK/WX/NEWS					
6:58:00 AM	1975	B	Since I Lost My Baby	Temptations	14	2:47	Fade	
6:59:00 AM	2112	E	The Long & Winding Road	Beatles		3:35	Cold	

**Alternate Songs** Log Diagnostics Log Statistics Clipboard

Find Songs from Category C Group One Low Sort Alternate Songs by CategoryStack

**Category C 70 Song Choices [in CategoryStack Order]**

Source	Category	Title	Artist	Intro	Length	EndType	Te
2146	C	Things I Used To Do	Guitar Slim	01	2:57	Cold	2
1160	C	Catch A Wave	Beach Boys		2:07	Fade	
1094	C	Beechwood 4-5789	Marvelettes	14	2:07	Fade	3
2010	C	South Street	Orlons	05	2:08	Fade	3

## Changing the Log Editor Display

You select which song properties are displayed on the Log Editor screen by select **[View][Columns]** from the menu on the Log Editor. Simply add or remove the desired properties to be displayed and the Music Log Editor will display only your selected properties. You may also switch between **[Scheduled-Clock-Times]** and **[Estimated-Run-Times]** using the **[View]** menu.

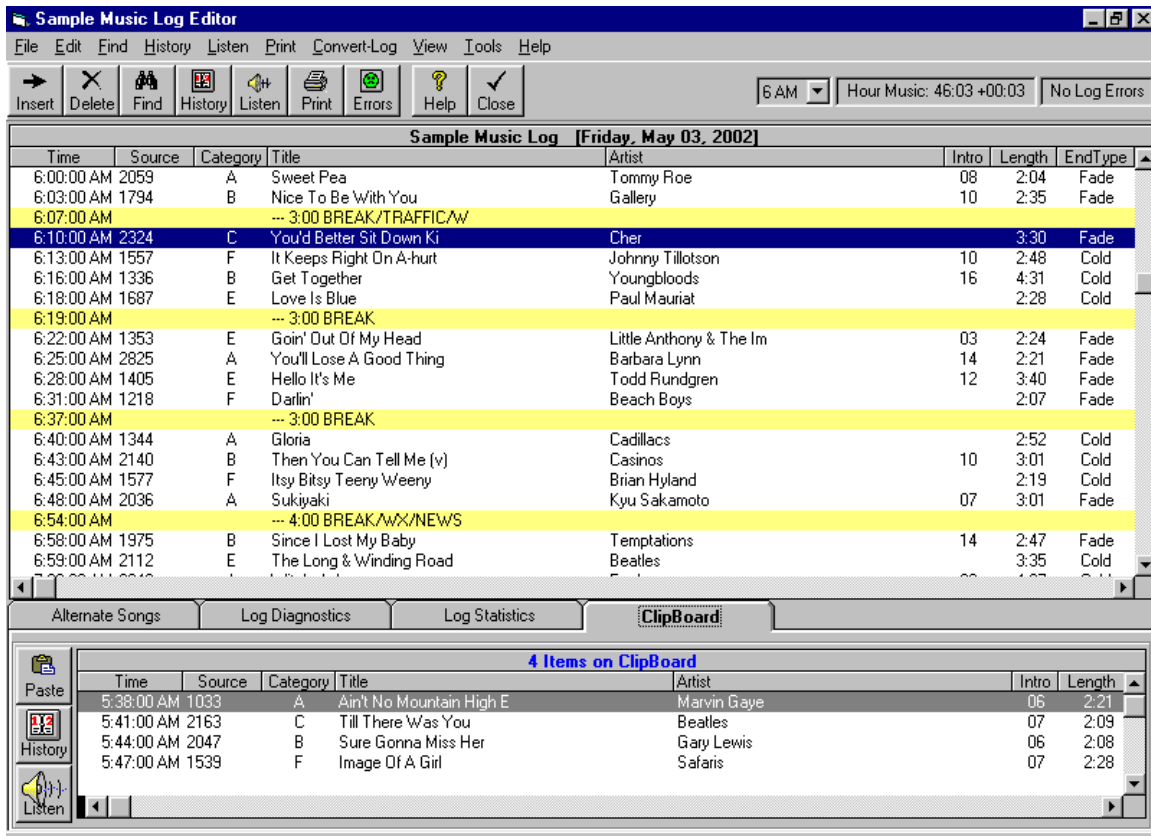
## Rearranging Songs on Music Log

To move songs around the Music Log, **[Left-Click]** and hold the mouse button on a song and dragging it to a new location on the Music Log. Release the button to drop the song into the slot.

## Swapping Songs on Music Log

You can use the **[Ctrl]** key combined with **[Left-Click]** of the mouse to highlight 2 songs to automatically swap log positions. Then click **[Edit][SwapLines]** to automatically swap the items' positions on the log. This only works when you have exactly 2 lines highlighted in red using the **[Ctrl][Left-Click]** method.

# Music Log Editor (cont)



## Inserting Alternate Songs onto Music Log

[Left-Click] and hold the mouse button on an alternate song and drag it to where you'd like it to appear and release the mouse button. If there is already a song at that location it will be removed and the alternate song will replace it. You may also highlight a song in the Alternate Songs Window and click [Swap] to swap the alternate song in place of the originally logged song.

## Clipboard - Cutting and Pasting Music Log

The Clipboard is a temporary container to hold items while cutting, copying, and pasting on the Music Log.

- To begin, select one or more items in the Music Log by slowly dragging your mouse over them while holding the [Right] mouse button. The selected items will turn red.
- You may then click [Edit][Cut] to move the items to the Clipboard. Click [Edit][Copy] to copy the items to the Clipboard.
- If you have items on the Clipboard, you may click [Edit][Paste] to insert all items on the Clipboard onto the Music Log at the current Music Log position. Any **Cuts** or **Copies** from the Music Log will clear any existing items from the Clipboard before the Cut or Copied items are placed on the Clipboard.
- You may Drag-and-Drop individual items from the Clipboard onto the Music Log or you may **Paste** the entire contents of the Clipboard at the currently-selected Music Log position.

# Music Log Editor (cont)

---

## Inserting Lines on Music Log

To add a blank line into the Music Log, highlight the spot where you'd like it to appear and click on the menu **Edit Insert**. You can then add a song or text.

## Deleting Lines from Music Log

To delete a text line or a song from the Music Log, highlight the line(s) you'd like to delete and click on the menu **Edit Delete**. To highlight (select) more than one line for deletion, **Right-Click** and hold the right mouse button down while you move the mouse over the lines to be deleted. Release the right mouse button and then [Left-Click] **Edit Delete**.

## Undo Music Log Edit

You may click **Edit Undo** to reverse the most recent Music Log edit.

## Displaying Song History

Click **History** on the top Log Editor menu bar to view the song history for the currently-highlighted song in the Music Log. Click **History** on the **Alternate Song Tab** or **Log Diagnostics Tab** to display the History of any highlighted alternate song or unlogged song.

## Scan for Log Errors [Missed Songs]

Click **Errors** to automatically scan for any "Missed Songs" on the Music Log. You will be moved to that location on the Music Log and possible songs to be used at this location will be displayed. "Missed Songs" are caused by the system being unable to select a song that meets all of your Rules. You may manually drag and drop any song into this slot, even if it violates Rules.

## Search for Items on Music Log

Click **Find** to search for Title, Artist, Music Category or any song property displayed on the Music Log Editor screen.

## Compute Length for a Segment of the Music Log

Using your mouse, hold the **Right Button** and move the mouse over the area for which you need the total length. When you release the mouse button, the computed length will appear in the red text box on the toolbar. Also see Format Clocks, ClockText to automatically print sweep and hourly totals on the Music Log.

## Print the Music Log

Click **Print** to print your Music Log. See also Printing Music Log to change the formatting of the printed Music Log.

## Send Log to Automation

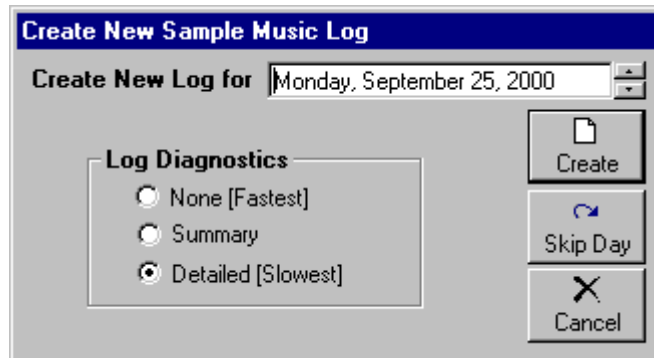
Click **Automation** to create a Log in the appropriate format for the Automation system you selected in Natural Music **Setup Station**. See Automation Interfacing

## Listen to Songs

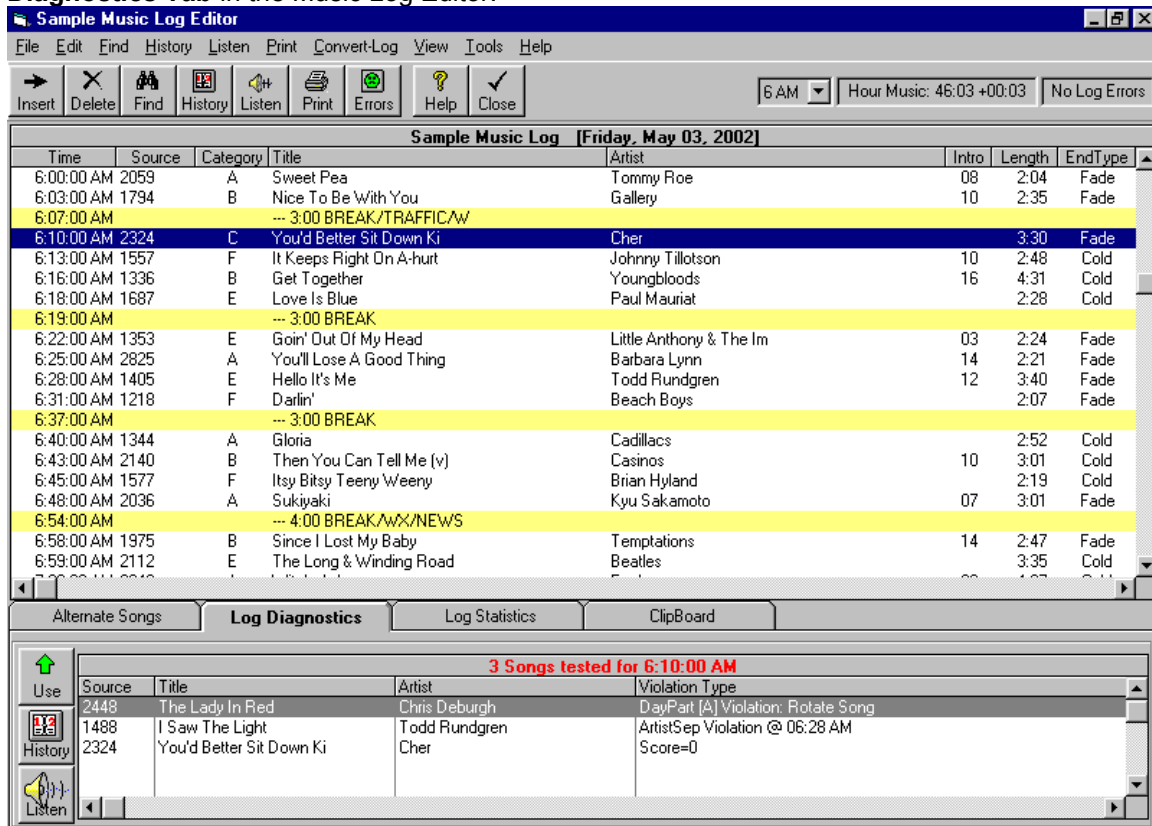
**Listen** launches your default MediaPlayer if you have one (e.g. Windows MediaPlayer, RealPlayer, WinAmp, etc.) so you can listen to song IF it is available from the NM5 computer. NM5 uses the WebAudioSource property as the filename it tries to play. If it cannot find that filename, it will open a browse window so you can locate the actual audio cut.

# Music Log Diagnostics

To create a helpful Diagnostic Log when creating a new Music Log, select **Detailed** Log Diagnostics on the New Music Log Screen. Selecting **Summary** will create a less detailed Diagnostic Log but may speed log creation in some cases. We recommend you always select **Detailed**.



After the Music Log is created, the Diagnostic Log can be displayed by selecting the **Log Diagnostics Tab** in the Music Log Editor.



The **Log Diagnostics Tab** will list all songs Natural Music attempted to schedule in the currently-highlighted Music Log slot and why they failed to log. You may drag a song from the **Log Diagnostics Tab** onto the Music Log to override the rule violation and force that song to be logged.

# Music Log Statistics

Natural Music can display how much music you have scheduled in each hour of your log by clicking the **Log Statistics** tab in the Music Log Editor. If the clock for that hour has a music limit, the Log Statistics will also show the mm:ss +/- (over or short) for that hour.

The screenshot shows the 'Sample Music Log Editor' window with a menu bar (File, Edit, Find, History, Listen, Print, Convert-Log, View, Tools, Help) and a toolbar with icons for Insert, Delete, Find, History, Listen, Print, Errors, Help, and Close. A status bar at the top right shows '6 AM', 'Hour Music: 46:03 +00:03', and 'No Log Errors'.

The main window displays a table titled 'Sample Music Log [Friday, May 03, 2002]' with columns: Time, Source, Category, Title, Artist, Intro, Length, and EndType. The table lists various songs and breaks, such as 'Sweet Pea' by Tommy Roe, 'Nice To Be With You' by Gallery, and 'You'd Better Sit Down Ki' by Cher.

At the bottom, the 'Log Statistics' tab is active, showing 'Hourly Music Totals' in a grid format:

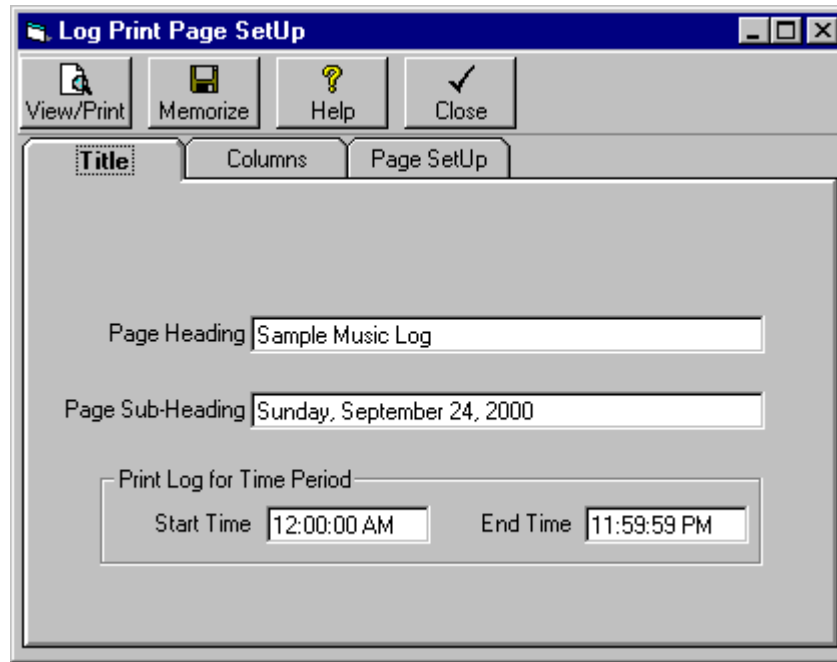
Hour	Time	Limit	Actual	Diff
12Mid	59:58	-00:02	4 AM	59:48 -00:12
1 AM	60:44	+00:44	5 AM	60:00
2 AM	59:54	-00:06	6 AM	46:03 +00:03
3 AM	59:10	-00:50	7 AM	46:53 +00:53
			8 AM	46:49 +00:49
			9 AM	45:29 -00:31
			10AM	49:00 +01:00
			11AM	49:07 +01:07
			12 N	47:25 -00:35
			1 PM	50:00 +02:00
			2 PM	49:10 +01:10
			3 PM	48:45 +00:45
			4 PM	47:13 -00:47
			5 PM	48:51 +00:51
			6 PM	48:48 +00:48
			7 PM	60:44 +00:44
			8 PM	60:53 +00:53
			9 PM	61:30 +01:30
			10PM	60:54 +00:54
			11PM	61:18 +01:18

You may click on any hour in the Log Statistics Window to jump to that hour in the Music Log.

# Music Log Printing

---

To print your Music Log, Click **[Print]** from the Music Log Editor screen. You will see a Music Log Design Screen. Click the **[View/Print]** button to see the results on your design and to print the final log.



## Title Tab

You may enter a Heading and Sub-Heading to be printed on each Music Log page. You may also select the time range for which the Music Log is to be printed.

## Columns Tab

You may select which song properties are to be printed on the Music Log. You can add or remove these properties by dragging them between the **Include** and **Available** boxes. To set the column widths to be printed and to actually print the music log, click the **[View/Print]** button to see the results on your design and to print the final log. On the Preview screen, you may drag the column dividers left and right to set the column widths. Natural Music will remember these settings the next time you print a log.

## Page Setup

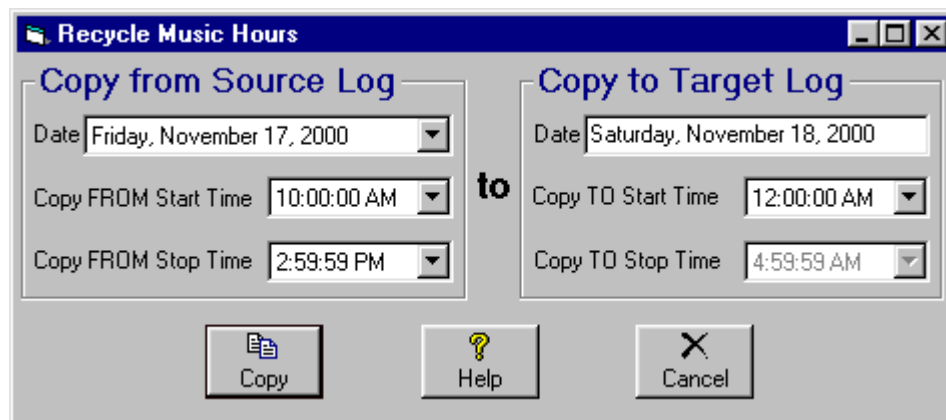
You may select the page margins, font and fontsize for the Music Log page.

# Recycle Music Hours

Recycling music hours is the ability to repeat exactly the same music schedule at another time and/or on another day. Some users do this as not to "use up" their library for certain unimportant hours overnight or when operating on low transmitter power. NM5 allows this to be done either manually or [after version 5.0.188] automatically by a special recycle command in clocks. This not the same as "gold recycling" in some other music schedulers which recycle only "gold" categories into hours without counting them as played. **Warning: This Recycle process cannot be UnDone!**

**Manual Recycle Example:** "Recycle" the midday music (10A-3P) to the next day from 12Mid-5A:

- In **[Setup][Clocks]**, don't put any clock in the hours to be copied-TO so the hours will be empty.
- In the Music Log Editor, open the music log into which you want to copy the recycled song list and select **[Edit]** from the menu.
- Then select **[Recycle Music Hours]**.



- You will need to specify the date for the "Source Log" (the log to be copied FROM). The Source log and Target log may be the same log, but if it is the same log, the Copy-FROM and Copy-TO times may not overlap. In other words, you cannot copy an hour onto itself within the same log.
- You will need to specify the "Copy FROM Start Time" (the start time in the source log to be copied FROM). In the example this would be 10:00:00AM
- You will need to specify the "Copy FROM Stop Time" (the last time in the source log to be copied FROM). In the example this would be 2:59:59PM
- You will need to specify the "Copy TO Start Time" in the Target Log (the first time in the Target log to be copied TO). In the example this would be 12:00:00AM
- When you click **[Copy]** the hours from the Source log will be copied into the Target log starting at the Target Start Time. In this example 10A - 2:59:59P would be copied from the specified source log into the 12A - 4:59:59A time slot in the Target log.

**Important Notes** All existing items in the target log in the time range to be Copied-TO will be deleted. No rule testing is done for recycled hours so there may be unreported song or artist violations between the pre-existing log and the recycled songs. When songs within recycled hours are copied into a Target log, they are not rotated to the bottom of their Music Category. This makes the copied hours "not count" as far as Music Category rotation is concerned. However, the history for the recycled song does reflect the actual play in the recycled hours of the Target log.

# Reconciling Scheduled Logs Against Actual 'Aired' Logs

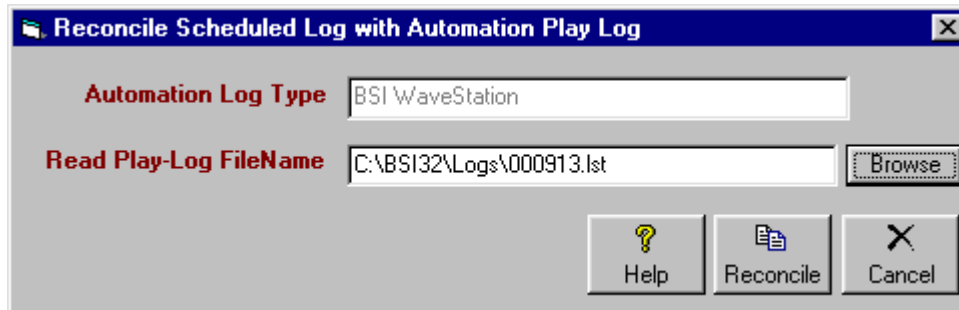
Reconciliation is an optional process whereby the NM5 Music Log is compared with an actual "aired" log. You may do this manually, by simply deleting any unplayed items from an NM5 log in the Music Log Editor. With some automation systems, NM5 can read the automation play-logs or air-logs. This reconciliation process may be performed to

1. Obtain actual playtimes of the songs for performance reporting.
2. Recycle un-played songs to the top of the category stack so they rotate more evenly.

## Reading an Automation System's Air-Log

To read an automation system's air-log or play-log, from the Music Log Editor select **[Convert-Log][Reconcile]**. Automated reconciliation is performed with only the following automation system play-logs:

- Arrakis Digilink 3 & 4
- AudioVault
- AutoMate System
- BSI WaveStation/Simian
- Digital JukeBox
- Enco DAD
- MediaTouch
- Prophet NexGen
- RDS Phantom
- Scott Studios AXS and SSDOS/SS32 Systems
- Salsa and Systemation



Use the **[Browse]** button to locate the automation play-log to be read and click **[Reconcile]** when ready to start the process.

**Any songs scheduled but not played by the automation** will be removed from the NM5 music log and returned to the top of the Music-Category stack IF that song had not been scheduled on any NM5 music log after the time it was originally scheduled to play. If the song was scheduled to play at a later date or time (as would be the case for currents or hot rotating songs), its category stack position is NOT changed.

**Any songs played by the automation but not scheduled** on the NM5 music log will be added to the NM5 music log. The song is rotated to the bottom of the Music-Category stack IF that song had not been scheduled on any NM5 music log after the time it was originally scheduled to play. If the song was scheduled to play at a later date or time (as would be the case for currents or hot rotating songs), its category stack position is NOT changed.

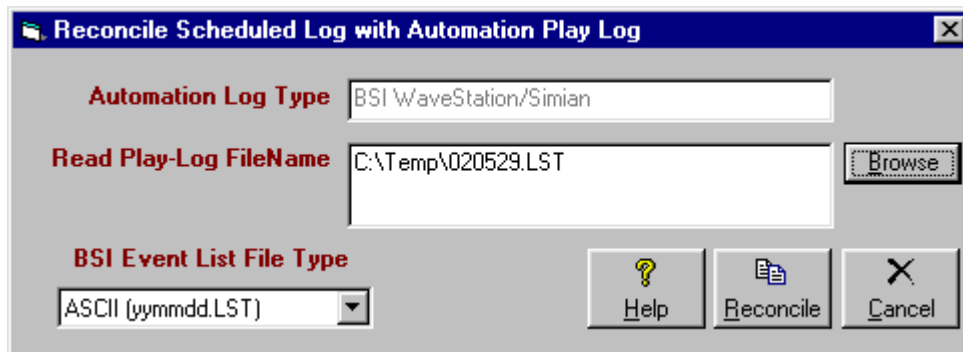
# Reconciling Scheduled Logs Against Actual 'Aired' Logs (cont)

## Special Considerations when Reading a WaveStation/Simian Event List

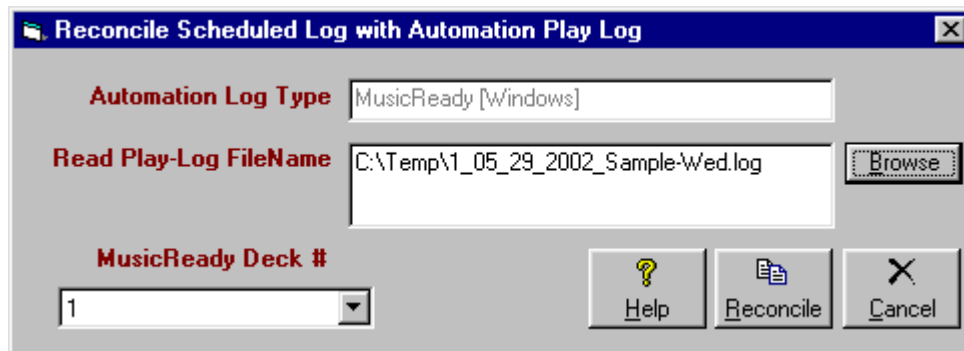
The BSI WaveStation can save its event list in one of 2 formats:

- MS Access named as yymmdd.MDB
- ASCII named as yymmdd.LST

The format of the event-list file is user-selected in the **[Tools][Program Options][General]** tab of the WaveStation. Natural Music can read either file. Just be sure to select the appropriate file type from the dropdown box on the NM5 Log Reconciliation screen shown below.



**Special Considerations when Reading a MusicReady [Windows version] PlayLog** The MusicReady creates a separate log for each deck. Be sure to read the log for the deck number from which you play music.

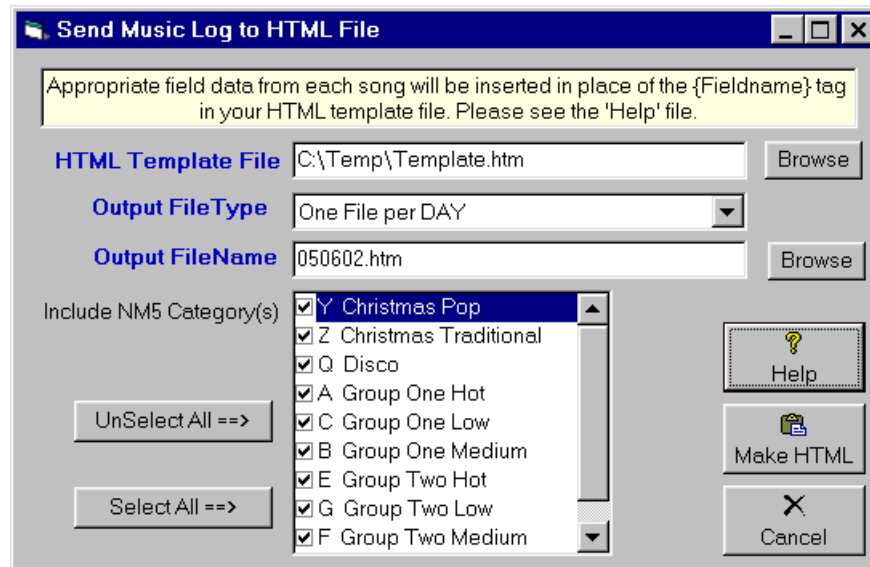


## Special Considerations when Reading a MediaTouch "Out" Log

Natural Music 5 can read the OUT log created by MediaTouch. Simply place it in a convenient folder and point NM5 to it during log reconciliation.

# Writing the Log to an HTML file

In the **[Log Editor][Convert-Log][HTML File]** select the type file you want. NM5 can create a single HTML file for a day or a separate HTML file for each hour. You can also select which categories you want to write to the file so you can exclude liners, jingles, etc.



Natural Music allows you to insert song data from your music log into a predefined HTML Template. You can use any web design program you like to create the Template so it may be as simple or as complex as you like. You must add a few special tags into the HTML template so NM5 knows where (and what) you'd like to insert.

**Natural Music Song Insertion Markers** In the HTML template you need to designate the area into which NM5 is to insert each song from the music log. This is done by inserting the following words in the HTML template. The braces are required! For each song in the log, NM5 will duplicate the HTML code between these start and end markers and insert the selected song fields.

**{nm5Start}** At the beginning of the HTML block in which NM5 is to insert data.  
**{nm5End}** At the end of the HTML block in which NM5 is to insert data.

**Natural Music Song Field Insertion Markers** Between the 2 markers shown above you place the HTML lines, tables or other HTML commands containing the NM5 song fields to be inserted as shown below. These field names must be entered as text in the HTML file and enclosed in {} and you may insert as many or as few as desired. When NM5 creates the final HTML file it will insert these song fields into the HTML file at the locations in which the {} fields are placed.

<b>{Album}</b>	<b>{Artist}</b>	<b>{CatalogNumber}</b>	<b>{Composer}</b>	<b>{Country}</b>
<b>{IRSC}</b>	<b>{Length}</b>	<b>{LinerNote}</b>	<b>{Other}</b>	<b>{Publisher}</b>
<b>{RecordLabel}</b>	<b>{Source}</b>	<b>{Style}</b>	<b>{Title}</b>	<b>{UPC}</b>
<b>{Year}</b>				

**Other Natural Music Insertion Markers** You may also place the following special tags in the HTML template. These may be located anywhere in the HTML template.

**{nm5Date}** Inserts the Log date.  
**{nm5Hour}** Inserts the Log hour.

**This page intentionally left blank.**