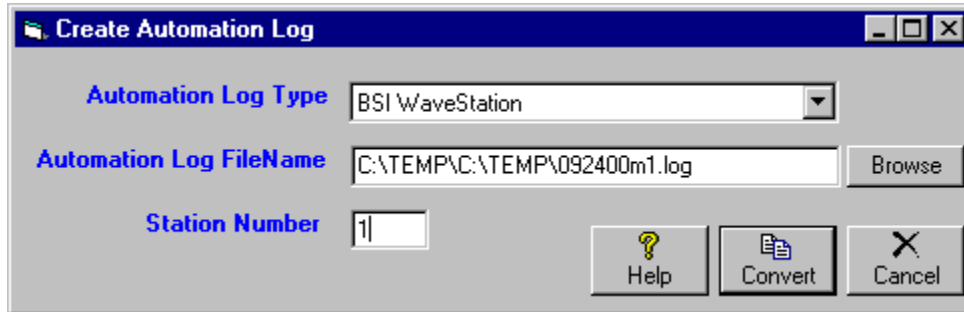


Automation Logs

Automation Logs are created in the Music Log Editor. At the Natural Music main screen, select **[Logs]**. Select an existing Music Log and then click **[Open]**. In the Music Log Editor, click **[Convert-Log]** and **[Automation-Log]** create the Automation Log.



Several automation systems have their own file formats. Natural Music converts to their formats when these automation systems are selected in **[Setup][Station]**. Otherwise Natural Music uses the output file format described in the Generic Automation Text Log Format depending on which Generic text output you select. The following Automation types are supported by Natural Music:

- **Arrakis Digilink™** See page 7-18
- **AXS™ 1 or 2** See page 7-16
- **Audisk™** See page 7-19
- **Automate System™** See page 7-30
- **AudioVault AV-Air™** See page 7-25
- **BarCode BCX 3™** See page 7-45
- **BSI WaveStation™ / Simian™** See page 7-8
- **BTSG Gen-IV System™** See page 7-39
- **CartWorks™** See page 7-33
- **ControlReady™** See page 7-32
- **Digital JukeBox™** See page 7-31
- **Digital Universe™** See page 7-38
- **DRS2006™** See page 7-35
- **Enco:DAD™ [Custom Filter]** See page 7-20
- **Enco:DADpro32™ [ASCII Flat File]** See page 7-22
- **EZ-Broadcaster™/EZ-2000™** See page 7-24
- **Generic Text Log Format** See page 7-6
- **Generic[Comma-Delimited] Log Format** See page 7-7
- **Maestro™/DCS™ [MusicPro™ Format]** See page 7-28
- **MediaTouch™** See Page 7-34
- **MusicReady™** See page 7-32
- **Myriad™** See page 7-43
- **Prophet NexGen™** See page 7-41
- **Pristine CDS32™** See page 7-33
- **Pristine RapidFire™** See page 7-42
- **Raduga™** See Page 7-36
- **RDS Phantom™** See page 7-26
- **Salsa/Systemation™** See page 7-27
- **Scott Studios™ SSDOS / SS32 / AXS-3** See page 7-15
- **Scott Studios AXS™ 1 or 2 ONLY** See page 7-16
- **Simian™** See page 7-8
- **Smartcaster™** See page 7-29
- **TuneTracker™** See page 7-47
- **UDS™** See page 7-37
- **WaveStation™** See page 7-8

Automation Logs

Automation Log FileName

The Automation Log output file varies depending upon what automation system you are using and will be displayed by Natural Music for your verification.

Station Number

The entry in the field will usually be the "Station Number". You may leave this blank but this station number helps uniquely name the Automation Music Log created by Natural Music. If using Natural Log traffic software, this station number should match the station number in Natural Log.

Example:

For station 1, the Automation Log would be named 112300M1.Log.

For station 2, the Automation Log would be named 112300M2.Log.

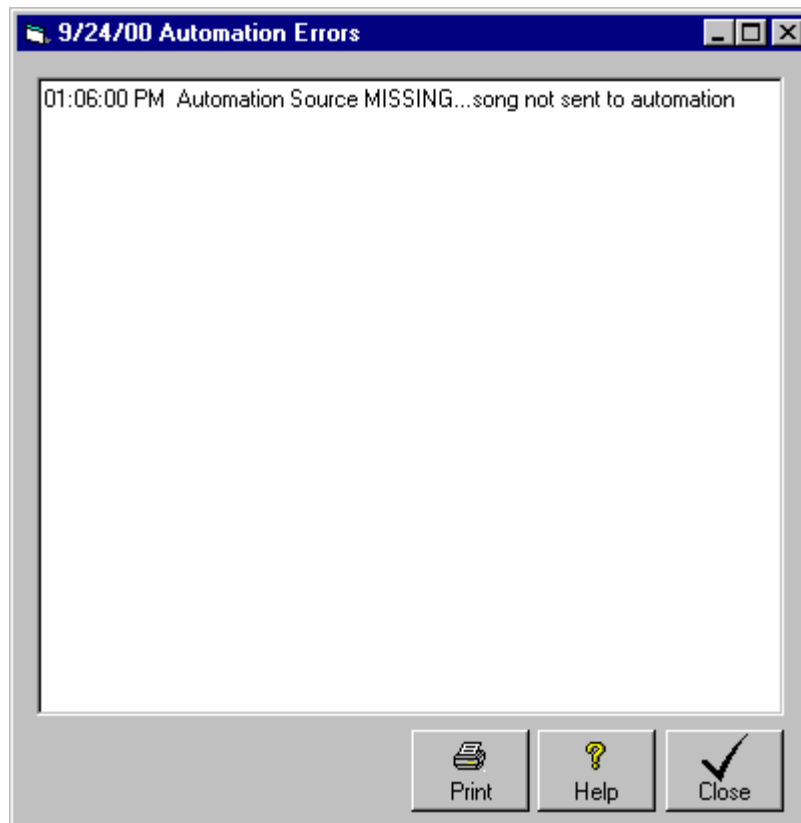
If you leave the station # blank, the Automation Log would be named 112300M.Log

Note: The following Automation systems do NOT follow the numbering system described above:

- **Arrakis Digilink, MediaTouch, Scott Studios SSDOS, SS32 or AXS-3, SmartCaster, CartWorks, Pristine DSC32, and DCS** automation systems will not accept any entry in this field, and it will not be visible.
- **Scott Studios AXS 1 or 2 [AXS Log]** For inserting music into 'Music Avail Slots' in an AXS log ONLY, enter the Avail Code ##### into which the music is to be inserted in the AXS Traffic Log. If you want to do a simple "Time" merge with an AXS Traffic Log, that is there are no 'Music Avail Slots' leave this box BLANK!
- **RDS Phantom** Natural Music needs to know if the station is **AM** or **FM** in the RDS Phantom.

Automation Log Errors

As Automation Logs are created any errors which are encountered are written to an Error File. If the system encounters at least one error, you will be prompted whether to display the Error Log. The Error Log will include a "Log Time" so you know where on the music log they occurred. The errors are self-explanatory and some are unique to specific Automation systems. The most common Automation Log error for all Automation systems is:



Automation Source MISSING...Song not sent to Automation This indicates that the "Source" property for that particular song is blank and Natural Music does not know what audio cut to tell the automation to play. To fix this:

- In the [Music][Song Browser], open the song and enter the "Source".
- In the Log Editor click **[View][Refresh Log]** to update the song entries on the Music Log.
- Then run the **[Automation Log]** again in the Log Editor.

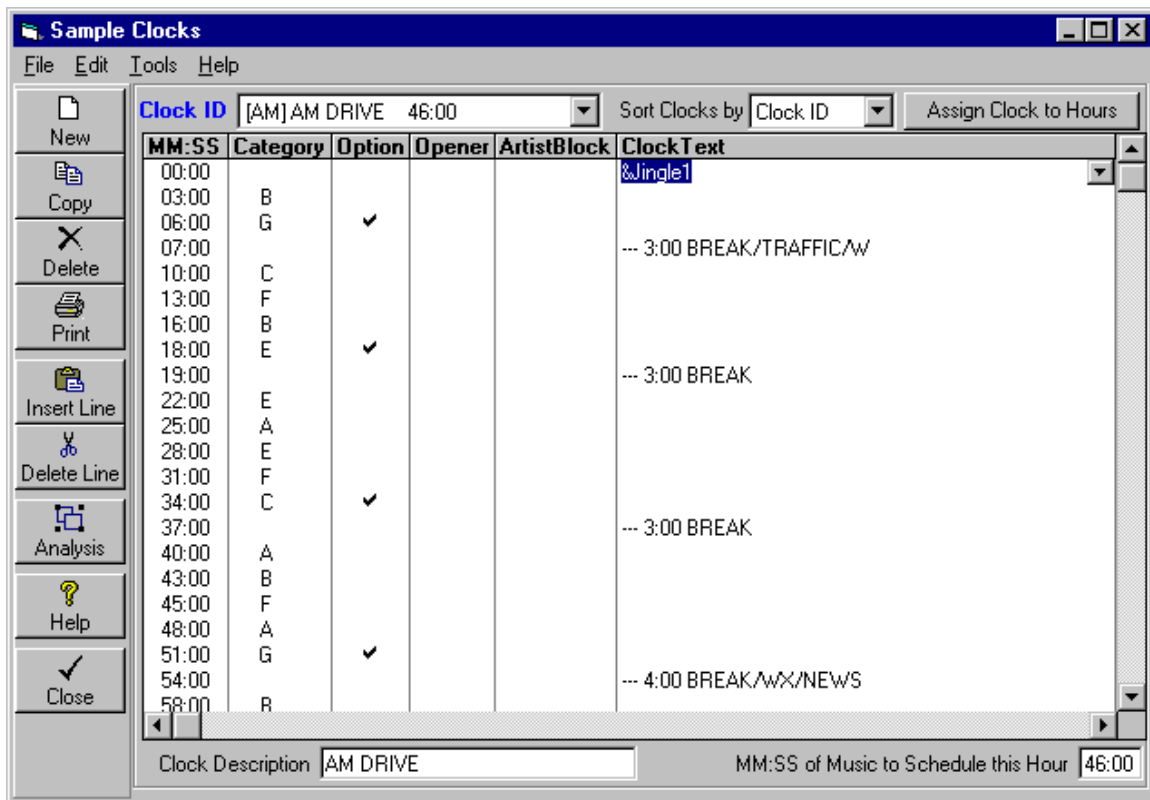
SmartCaster/EZ-Broadcaster/EZ-2000 Too many Songs in Break...For these Automation systems, there is a limit of 10 songs per "Music Break". Fix the clocks so that you never have more than 10 songs between "Break Markers".

SmartCaster/EZ Broadcaster Too many Songs Invalid Break Number... For these Automation systems, there is a limited number of "Music Breaks" per hour. The limit is 10 for EZ-Broadcaster and 12 for SmartCaster. Fix the clocks so that you never have a break number higher than the limit.

Using ClockText on Format Clocks to Send Commands to Automation

When using automation, it is sometimes necessary to send command codes to the automation, such as source switching, playing jingles, legal ID's, etc. Usually the traffic system handles this, but here may be a need to send some command codes through the Music System. This is done in Natural Music by entering **TEXT** on the Clock Setup at whatever point you need the command to occur. You indicate to Natural Music that this is a command to be sent to the automation by preceding it with **&**.

Scott Studios SSDOS, SS32 or AXS-3, CartWorks, Pristine CDS32, Computer Concepts DCS/Maestro, MediaTouch, Salsa/Systemation, and BTSG automation users should consult those sections of this Manual for different rules for sending commands to those systems.



- Leave the Music Category column blank
- **&** must be the first character on the line followed immediately by the audio cut ID
- Everything to the right of **&** up to the first blank space is sent as the audio cut ID to be played.
- After the space, you can put an optional description, but only the characters up to the first blank space is sent as the Audio Cut ID.
- If you want to send a specific cut length, this length must be enclosed in { }.
- Be sure to observe the Audio File naming conventions used by your Automation system.

Turning Automation Log Off/On

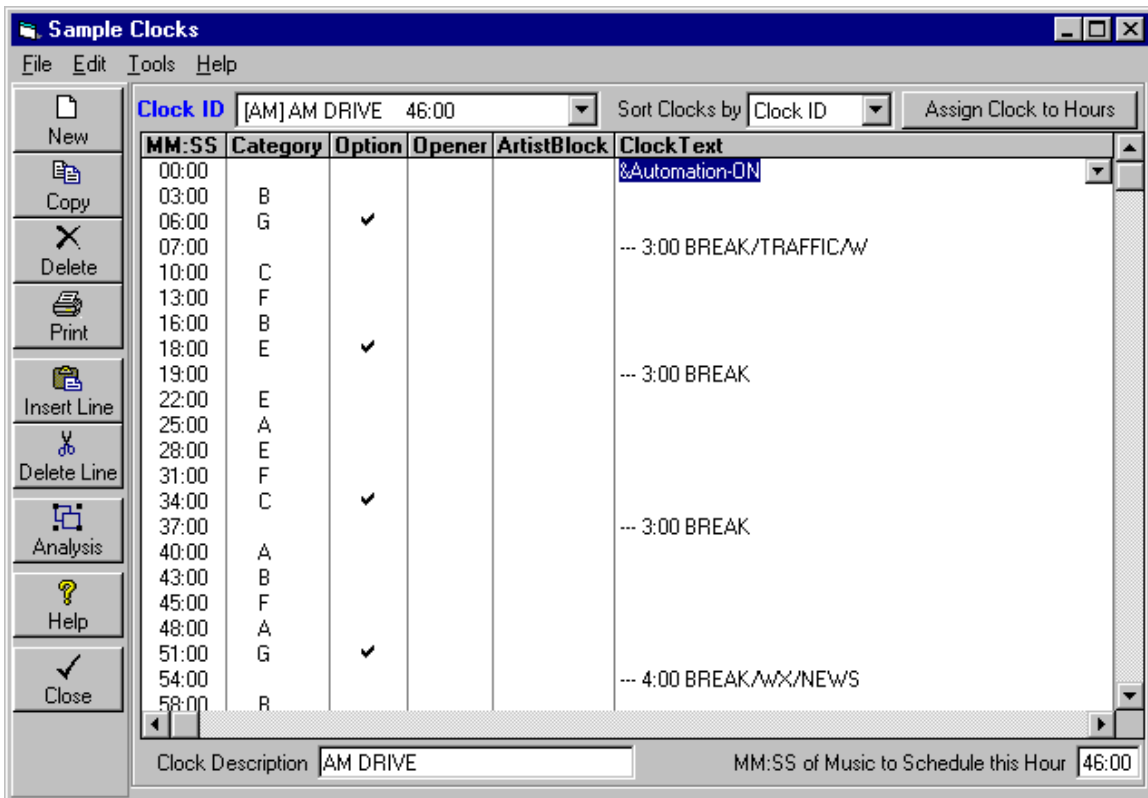
In unusual circumstances, you may not want to send the entire Music Log to the Automation Log. You do not need to use the commands these at all except to STOP the music from being sent to the Automation Log. That is, without these commands, NM5 assumes you want the entire Music Log sent to the Automation Log.

Automation Off

Enter the following item in **ClockText** column of your Format Clock to STOP the music data from being sent to the Automation Log. No items after this entry will be sent to the Automation Log until NM5 sees an Automation ON command. Nothing else should appear on this line of the Format Clock except the following: **&Automation-Off**

Automation On

Enter the following item in the **ClockText** column of your Format Clock to RESTART the music data being sent to the Automation Log. All items after this entry will be sent to the Automation Log until NM5 sees an Automation OFF command. Nothing else should appear on this line of the Format Clock except the following: **&Automation-On**



Generic Automation Text Log Format

Automation Logs are created in the Music Log Editor. At the Natural Music main screen, select **[Logs]**. Select an existing Music Log and then click **[Open]**. In the Music Log Editor, click **[Automation Log]** to create the Automation Log

Generic Text Log Format

This describes the automation log created by Natural Music when you select the **Generic Position Dependent Text File** automation output. Please see the help information regarding your specific automation system to determine if Natural Music creates an output file in this format or in a proprietary format for your automation system. Call Natural Software with any questions about this file format. You can use this information to configure the "reader" programs provided by many automation systems.

The output file is straight ASCII text with no page breaks, no formfeeds, no headers, and no graphics. Each line is 78 characters long **plus** a Carriage Return/Line Feed (total 80 characters per record). This file can be read using any text editor such as Windows NotePad.

Start	Length	Field Identification
1	8	Scheduled [Military] Time formatted as hh:mm:ss
10	8	CD or Audio FileName
20	24	Song Title
45	4	Length in mm:ss
50	24	Artist names(s)
74	2	Intro time [may be blank]
77	2	Not Used

If you select the normal **Generic Text** automation log type, the cutID's or filenames [NM5 Sources] are limited to 8 characters and will appear in column 10 through 18 of the text record. If you select **Generic Text LONG CutID's** as the automation log type, the cutID's or filenames [NM5 Sources] are placed starting at column 80 and are unlimited in length [not at column 10].

Generic Text Log FileName

The Text Log is **mmddyrM#.TXT** where:

- Mm = Month ## left zero-padded
- dd = Day ## left zero-padded
- yr = Year ## (95 for 1995, 01 for 2001)
- M = Music schedule (T is Traffic schedule)
- # = station number (usually 1 or 2)

Example: Music Log for 03-28-92 for station #1 is 032892M1.TXT

Generic Comma-Delimited Automation Log Format

Automation Logs are created in the Music Log Editor. At the Natural Music main screen, select **[Logs]**. Select an existing Music Log and then click **[Open]**. In the Music Log Editor, click **[Automation Log]** to create the Automation Log

Generic Comma-Delimited Output Log Format

This Comma-Delimited Automation Log format is an alternate text format that may be helpful to export song data fields in comma-delimited format if your automation cannot read the Generic Text Log Format. Please call Natural Software with any questions about this file format. You can use this information to configure the "reader" programs provided by many automation systems.

The output file is straight ASCII text with no page breaks, no form feeds, no headers, and no graphics. Each line contains the following data fields for each song entry in the Music Log. Each data field is separated by a comma. Each Line is terminated with a Carriage Return/Line Feed. This file can be read using any text editor such as Windows NotePad.

Field	Field Identification
1	Scheduled [Military] Time formatted as hh:mm:ss
2	Source
3	Source2
4	Title
5	Length in mm:ss
6	Artist Names(s)
7	Intro Length [may be blank]
8	End Type [may be blank]
9	Fade Length [may be blank]

Generic Comma-Delimited Output Log FileName

The Comma-Delimited Natural Music output log file is named **mmddyrM#.CSV** where:

- Mm = Month ## left zero-padded
- dd = Day ## left zero-padded
- yr = Year ## (95 for 1995, 01 for 2001)
- M = Music schedule (T is Traffic schedule)
- # = station number (usually 1 or 2)

Example: Music Log for 03-28-92 for station #1 is 032892M1.CSV

BSI WaveStation™ or Simian™ Automation Logs

Note: WaveStation™ and Simian™ are different automation systems from BSI. However, they both use the same import and export file structures and commands. Therefore this manual will refer to WaveStation™ but the information provided is equally applicable to Simian™

Automation Logs are created in the Music Log Editor. At the Natural Music main screen, select **[Logs]**. Select an existing Music Log and then click **[Open]**. In the Music Log Editor, click **[Convert][Automation Log]** to create the Automation Log. It should normally be sent to the **\\BSI32\\Import** folder on your WaveStation computer.

Note Regarding WaveStation Support

Natural Broadcast Systems and BSI are separate companies.

- Call BSI (1-500-677-TECH) for problems with WaveStation operation.
- Call Natural Broadcast Systems (210.349.5808) for problems with Natural Music.

There are 2 Natural Music output log formats you may use to interface to WaveStation. Both work equally well, **but you MUST configure the Log Import filter in WaveStation differently depending on which output log format you select to use to export the Natural Music Logs.**

BSI WaveStation Music Log Format

This is the same format used by Natural Music for DOS. Most users will continue to use this format unless they want to use more than 8 characters to name audio cuts in WaveStation. If you decide to use more than 8 characters, you will need to use the WaveStation Comma-Delimited format described below. See [WaveStation Sources](#) for more information. Also see [Configuring normal BSI WaveStation Log Import Filter](#)

BSI WaveStation [Comma-Delimited] or [Tab-Delimited] Music Log

Some users have special needs that require one of these formats. If you want to use WaveStation audio cut filenames exceeding 8 characters (not counting the .wav or .mp3 extensions), you must use a Delimited output log format. The "Delimiter" is the character (comma or tab) that separates the values in the log. These formats also allow more characters to be sent from Natural Music for the Title/Artist description that shows up on the WaveStation log screen. If you are using commas in any Macro commands you are sending from NM5, you should use the [Tab-Delimited] format so WaveStation won't get confused by the commas in the commands. See [WaveStation Sources](#) for more information. Also see [Configuring BSI WaveStation Delimited Log Import Filter](#).

WaveStation Music Log FileName

The BSI WaveStation music file does not use the *Generic Text Log File Format*. Whichever output log format you use will normally be sent to the **\\BSI32\\Import** folder on the WaveStation computer.

The BSI WaveStation music log is named **mmddyM#.LOG**.

- mm = Month ## left zero-padded
- dd = Day ## left zero padded
- yr = Year ## (95 for 1995, 01 for 2001)
- M = Music Log
- # = Station #

Example: The regular BSI WaveStation music log for 03-28-92 is 032892M1.LOG. The BSI WaveStation [Comma-Delimited] music log for 03-28-92 is 032892M1.CSV. Either file can be viewed with a text editor such as NotePad.

BSI WaveStation™ Automation Log

WaveStation Audio File Names Before ripping or dubbing music into WaveStation, please consider the following:

- WaveStation 3.0 allows use of long filenames (greater than 8 characters plus .WAV). The .wav does NOT count as part of the 8 character limit.
- BSI, the vendor of the WaveStation system does not recommend use of these long filenames because they slow down the WaveStation when it is looking for audio cuts.
- Natural Music can handle long filenames up to 100 characters in the Source field but we do not recommend using more than 8 characters!
- If you use more than 8 characters in the filenames, you must use the BSI WaveStation [Tab-Delimited] automation log instead of the normal BSI WaveStation log format created by Natural Music.
- Examples of Acceptable short FileNames are:
MAD.wav M1234.wav NOS1234.wav

WaveStation™ Categories

WaveStation uses a `Category' to determine the type of file it is being told to execute. The default value sent to WaveStation by Natural Music is **AUDIO** unless you enter another WaveStation Category in the Natural Music Source2 field during song entry.

WaveStation™ Q Start-Codes

WaveStation uses 5 codes (designated as **Q** in WaveStation) to determine how an event is triggered. These are placed in Column 9 of the automation log by the Natural Music log converter. Natural Music **automatically** sends + as the Q Code for any event in which you have not specified another valid Q code. To send a Q code other than + for a line on which a Music Category is specified in the clock setup screen, type the following in the Clock Text column of that event line with no other text.

Important: You must UNcheck the box next to **Force AutoStep + on all events** in WaveStation's Log Import setup. Otherwise all Q's will remain + regardless of what you enter in NM5 clocks. See Configuring WaveStation Log Import Filter.

- &Q+** Segues after prior event or cut ends. This is the default value used by Natural Music
- &Q@** Plays at a specific time without waiting for previous event to end
- &Q#** Plays at a specific time but waits for a playing cut or event to end. This is useful to skip any unplayed items at the end of an hour and reposition the WaveStation to begin a new hour at the appropriate log position to keep it on schedule.
- &Q!** Wait for "BackTimed Start". This causes Simian to change the pitch of the playing audio to backtime to a specific event. See Simian Manual for more information.
- &Q\$** Wait for "Manual Start" (**Converted** to Q=[Blank] when sent to WaveStation)
- &Q~** Applies only to WaveStation version 3 and later. **Converted** to **N** when sent to WaveStation for non-sequential timed start of recording, switching, etc.

BSI WaveStation™ Automation Log

Playing Audio Cuts from Clock Text

When using automation, it is sometimes necessary to have the automation play jingles, liners, etc. at certain points in your Natural Music Format Clocks. You could just create Music Categories for these items. You can also "Hard Code" them onto your Natural Music Format Clocks. This is done in Natural Music by entering commands in the Clock Text column at whatever point you need the command to occur. The Audio Cut or Cart to be played is read from the character following the & to the first blank space. The format must be followed exactly. Also See WaveStation "Q" StartCode

To Send Audio Play Commands:

- you must start with the character &
- Then put the WaveStation/Simian Audio Name or Cart Name
- The Q code (#, @, \$, +, or !)
- A blank space
- An optional Description
- If you want to send the optional cut length, it must be enclosed in { }.

Example 1: To tell WaveStation/Simian to play the audio cut (or WaveStation/Simian "cart") named LegalID with a Q code of # that is 10 seconds in length, enter the following in the Clock Text column of NM5. This will send the LEGALID as FileName, AUDIO as the WaveStation/Simian "Category" and # as the BSI Q.

&LegalID# Top of Hour ID {00:10}

Example 2: You want to tell WaveStation/Simian to play the audio cut (or WaveStation/Simian "cart") named LegalID with a Q code of # but you want it sent as Category other than AUDIO so BSI's system won't display it on your website. Enter the following in the Clock Text column of NM5. This will send LEGALID as FileName, ID as the WaveStation/Simian "Category" (or anything you place within the [] brackets), and # as the BSI Q. Note Q goes immediately after the Category bracket, then a space then the filename, then another space, then the optional description.

&[ID]# LegalID Top of Hour ID {00:10}

Executing WaveStation Macros

When using WaveStation, it is sometimes necessary to execute macro Commands for things like relay and network switching. These are "Hard Coded" onto your Natural Music Format Clocks. This is done in Natural Music by entering the command in the Clock Text column at whatever point you need the command to occur. The format must be followed exactly but you may use one-letter abbreviations for the categories shown below or the entire [Category] for any not listed below:

To Send Non-Audio Commands:

- & followed by the [Category] in brackets. Some common examples are:
 - [M] or [MACRO] WaveStation/Simian Execute Macro
 - [C] or [COMMENT] WaveStation/Simian Comment
 - [T] or [TEXT] WaveStation/Simian Display Text
 - [LOG] WaveStation/Simian Load a Day's Log
 - [A] or [APP] WaveStation/Simian Run an Application
- The Q code (#, @, \$, +, or !) See Q-Codes
- A blank space
- The name of the command to be executed.

Example for WaveStation Macros

&[M]@ RELAY 1 100 will close relay 1 for 100 milliseconds. The @ indicates that this will be executed at an exact time.

BSI WaveStation™ Automation Log

Command to Load Next Day's WaveStation Log

When using WaveStation, you have to tell it when to load the next day's log. This is usually done in Traffic, but Natural Music can handle this for you. This is done in Natural Music by entering **TEXT** in the Clock Text column for the last hour of the day. The format must be followed exactly:

To Tell WaveStation to Load Next Day's Log

- **& [LOG]+**
- **A blank space**
- **[MMDDYY]**
- **A 2-digit Letter/Number combination such as C1, M1, C2, etc.**
- **A blank space**
- **[NEXT]**

Load Log Example To tell WaveStation to load the next day's log assuming you use M1 as the extension, enter the following in the last event of the Natural Music Clock for the last hour of the day:

&[LOG]+ [MMDDYY]C1 [NEXT]

Natural Music will automatically insert the next date in place of MMDDYY when it creates the Music Log for each day. Note: If you use a different last 2 characters for the filename (such as M2 or C1 or C2) just use those characters in place of C1 in the above example. C1 above indicates a combined log for station 1.

Importing Logs Into WaveStation

Before logs can be loaded by WaveStation, you must **import** them into the WaveStation format. To Import a Natural Music Automation Log into WaveStation, first be sure you have Configured WaveStation's Log Import Filter

Then in WaveStation:

1. Click **[File][New Program Log]** to clear the screen/
2. Click **[File][Import Program Log]**
3. Select the day's Log and click **[Open]**

You should then see the Natural Music log on the screen. If not, see TroubleShooting WaveStation Import Problems

BSI WaveStation™ Automation Log

Configuring Normal WaveStation Log Import Filter

Warning There are 2 ways to export logs from Natural Music to BSI WaveStation. The following instructions apply to the normal Natural Music automation log for BSI WaveStation. Users of the Natural Music BSI WaveStation [Comma-Delimited] log output must see [Configuring WaveStation \[Comma-Delimited\] Log Import Filter](#)

WaveStation's log import filter must be configured to read our standard text log output file. This consists of telling WaveStation the location of the log elements. In **WaveStation**, you need to use the **[Tools]**, **[Program Setup]**, **[Log Import]** section:

- Click **[Music Import]**.
- Click on **[Position Dependent]** file format.
- Click to **UnCheck Force AutoStep +....**
- Click to **Check Automatically Save...**

Then enter the following items:

Item	Start	Length
Cue	9	1
Time	1	8
Name	10	8
Length	65	5
Category	56	8
Description	20	35

When complete click **Done** before closing the screen.

BSI WaveStation™ Automation Log

Configuring WaveStation Delimited Log Import Filter

Warning There are 2 ways to export logs from Natural Music to BSI WaveStation. The following instructions apply to the Natural Music automation log for BSI WaveStation Demimited [Comma-Delimited] or [Tab-Delimited]. Users of the normal Natural Music BSI WaveStation log output must see [Configuring Normal WaveStation Log Import Filter](#)

WaveStation's log import filter must be configured to read our standard text log output file. This consists of telling WaveStation the location of the log elements. **In WaveStation**, you need to use the Tools, Program Setup, Log Import section:

- Click **[Music Import]**.
- Click on **[Delimited]** file format.
- Enter **comma** or **tab**, as the delimiter
- Click to **UnCheck Force AutoStep +....**
- Click to **Check Automatically Save...**

Then enter the following items:

Item	Position
Cue	1
Time	2
Name	3
Length	4
Category	5
Description	6

When complete click **Done** before closing the screen.

BSI WaveStation™ Automation Log

Troubleshooting WaveStation Log Import

Problem The WaveStation Log *Name* column is blank or there are odd characters on the WaveStation Log.

Solution WaveStation Log Import filter has not been configured to read Natural Music logs. See [Configuring WaveStation's Log Import Filter](#)

Problem The WaveStation Log shows Q of + on all events even though you tell Natural Music to send another Q for some events.

Solution WaveStation Tools, Program Setup, Log Import is set wrong.

- [Force AutoStep + on all events...](#) must not be checked. See [Configuring WaveStation's Log Import Filter](#)
-

Problem The WaveStation doesn't load the next day's log.

Solution Be sure the next day's log is imported and saved before WaveStation tries to load it. Be sure the Q-Code is not @. WaveStation's Load Log command should have a Q-Code of + per BSI support staff.

Scott Studios™ Automation Log for SSDOS / SS32 or AXS-3 Systems

At the Natural Music main screen, select **[Logs]**. Select an existing Music Log and then click **[Open]**. In the Music Log Editor, click **[Automation Log]** to create the Automation Log

Scott Studios Music Log File

The Music file for uses the Scott Studios comma-delimited format and can be merged with the Traffic log using the Merge32 program provided by Scott Studios. The log name is **yymmdd.LOG** where

- mm = Month ## left zero-padded
- dd = Day ## left zero padded
- yr = Year ## (95 for 1995, 01 for 2001)

Example: The Natural Music output file for Scott Studios SSDOS, SS32 or AXS-3 systems for 03-28-92 is 032892.LOG. This file can be viewed with a text editor such as NotePad.

Sending Automation Commands / Filenames Using Clock Text

When using automation, it is sometimes necessary to send command codes to the automation, such as source switching, playing jingles, legal ID's, etc. Usually the traffic system handles this, but here may be a need to send some command codes through the Music System. This is done in Natural Music by entering **TEXT** on the Clock Setup at whatever point you need the command to occur. You indicate to Natural Music that this is a command to be sent to the automation by preceding it with **&**.

- Be sure to start with the **&**
- If you want to send a sync-code [such as * . # ?], place it immediately after the **&**, otherwise sync will be assumed to be blank. If the sync code were to be * then you could enter **&*JIN-DA1234**
- When using the Clock-Text column for Scott's SSDOS, SS32 or AXS-3 systems, always separate the "Category" and DA number with a dash. If no category, (such as with commands) do not include the dash and just put the command identifier.
- After at least 1 blank space to designate the end of the cut #####, you can put a description as follows: **Title, Artist, Trivia, Intro, EndType** separated by commas.
- You may include a cut length by placing it after the Description using the format {mm:ss}. Example: **&JIN-DA1243 Jingle {00:07}**
- Text lines to appear on the screen of SS32 may be sent as **&..** a space then the text.

Commercial Breaks: A Scott Studios commercial break may be created by putting the following in the Clock Text column of NM5. Insert the desired break length in place of mm:ss (2-digit minutes are required such as 03:00 for 3 minutes) **&COM-DALIVE {mm:ss}**

Voice Tracks To tell Scott Studios systems to play a VoiceTrack, use the following in the Clock Text column [Music Category column must be blank]. After the first space, a description may be entered.

- &VTK-JNTIME** for 'Jock' recording with **No** link;
- &VTK-JUTIME** for 'Jock' recording with a link **Up** to the previous cut
- &VTK-JDTIME** for 'Jock' recording with a link **Down** to the post-voice track cut
- &VTK-JBTIME** for 'Jock' recording with a link **Both** up and Down

Scott Studios Source Restrictions

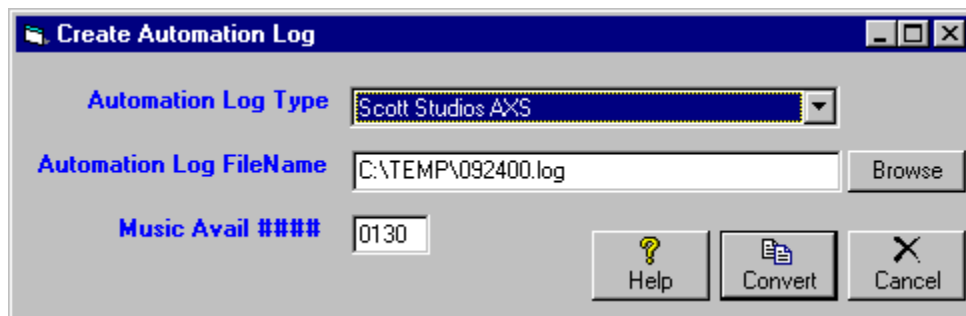
Scott Studios uses a 'Category' (e.g. MUS, 123, etc) plus a cut number to identify audio cuts so this restricts what you may put in the *Source* field during song data entry.

- Place the DA##### in the Source entry field (include the DA).
- Place the Scott Studios *Category* in the Source2 field. (not the NM5 "Music Category")

Scott Studios AXS™ Automation

Note: This section applies only to the older versions of AXS prior to version 3. If using AXS-3, see [Scott Studios SSDOS, SS32 or AXS-3](#).

Automation Logs are created in the Music Log Editor. At the Natural Music main screen, select **[Logs]**. Select an existing Music Log and then click **[Open]**. In the Music Log Editor, click **[Automation Log]** to create the Automation Log.



AXS Automation Music Log FileName

Natural Music inserts the music log data into the native AXS log file format. The AXS Log is named mmddy.LOG where

mm = Month ## left zero-padded
dd = Day ## left zero-padded
yr = Year ## (95 for 1995, 01 for 2001)

Example: AXS Log for 03-28-92 is named 032892.LOG.

If Natural Music finds an existing AXS log for that date, NM5 assumes it contains traffic spots and music data is inserted around the spots. There are 2 ways to merge music into the AXS traffic log:

Inserting Songs into Music Avails

If your traffic log has Music Avails built into it for songs to be inserted into, enter the Music Avail #### on the NM5 Log Automation screen. This will force the songs to be inserted into your existing AXS traffic log only into the slots with the specified Music Avail ####.

Merging by Scheduled Time

If your traffic log does not have specific Music Avails built into it, leave the Music Avail #### on the NM5 Log Automation screen blank. This causes songs to be inserted into your existing AXS traffic log around the existing traffic items based solely on scheduled time. **Warning:** If you run this Natural Music Log Automation [Merging by Scheduled Time] more than once for the same AXS traffic log you will get doubled songs! If you need to re-export the music log, you will need to get a fresh AXS traffic log without music in it.

AXS™ Source Restrictions

AXS1/AXS2 uses a Cut Number from 2000 to 9999 to identify hard disc audio cuts. Be sure to put a valid AXS cut number in the Source entry field in Natural Music. This is the field that will be sent to AXS to tell it to play this Audio Cut. For CD-based AXS systems, the NM5 Source entry field must be entered EXACTLY as follows: **CD-ppmddd-tt** where **CD-** tells NM5 that it is a CD, **pp** is the 2-digit AXS CD-player number, **m** is the magazine (or 0 if jukebox-type CD player), **ddd** is the 4-digit disc slot number in the player, and **-tt** is the 2-digit track number on the disc (- required). NM5 will perform back-to-back CD-player protection tests during log generation if the source is entered this way.

Scott Studios AXS™ 'CML' Log

Note: This section applies only to AXS 1 or 2 using a CML format compatible with SuperLog. If using AXS 3, see the instructions for interfacing to the Scott Studios SSDOS, SS32 or AXS-3.

Automation Logs are created in the Music Log Editor. At the Natural Music main screen, select **[Logs]**. Select an existing Music Log and then click **[Open]**. In the Music Log Editor, click **[Automation Log]** to create the Automation Log

Interfacing to Scott Studios AXS™ Using CML Format

The ONLY situation in which this AXS [CML] log might be used is to facilitate merging done by the **Super Log™** traffic scheduler. This CML file is compatible with the import and merge features of the **Super Log** system. We do NOT provide support for this merging process, Natural Music simply creates a CML formatted log for you to use in that process. Please contact Super Log support if you want to use their log merging system with this CML log file.

AXS [CML] Automation Music Log FileName

Natural Music can create a standard CML log which may be useful if you are using "Super Log™" to merge the Traffic and Music logs. The AXS [CML] Log is named dddddd.CMLwhere

- dddddd = day of the week Monday - Sunday

Example: AXS [CML] Log for 03-28-92 is named SATURDAY.CML.

Arrakis DigiLink™ Automation Log

Automation Logs are created in the Music Log Editor. At the Natural Music main screen, select **[Logs]**. Select an existing Music Log and then click **[Open]**. In the Music Log Editor, click **[Automation Log]** to create the Automation Log

Digilink Automation Music Log FileName

The Digilink Music file is the native Digilink log file named **TmmddyM.DIG** where

- mm = Month ## left zero-padded
- dd = Day ## left zero-padded
- yr = Year ## (95 for 1995, 01 for 2001)
- M = Music schedule (T is Traffic schedule)

Example: The Digilink Music Log for 03-28-92 is T032892M.DIG. This file can be viewed with a text editor such as NotePad

You can use the Arrakis Digilink Utilities/Transfer/Import functions to import this music file into Digilink where it is merged (by the Digilink) with the Traffic Log.

Also see

[Using ClockText on Format Clocks to Send Commands to Automation](#)

AuDisk™ Automation Log

Automation Logs are created in the Music Log Editor. At the Natural Music main screen, select **[Logs]**. Select an existing Music Log and then click **[Open]**. In the Music Log Editor, click **[Automation Log]** to create the Automation Log

The Music log created by NM5 for Audisk is a text file formatted as shown below. You will need the MAKELOG.EXE program with Audisk in order to import this Music Log into the Audisk event file.

AuDisk Automation Music Log FileName

This AuDisk log file does not use the Natural Music Generic Text Log Format. For the file format see [AuDisk MakeLog Configuration](#) below. The Music log file for Audisk is named **mmddyyyy.ASC** where

- mm = Month ## left zero-padded
- dd = Day ## left zero-padded
- yr = Year ## (95 for 1995, 01 for 2001)

Example: The Natural Music log file for **Audisk** for 03-28-92 is 03281992.ASC. This file can be viewed with a text editor such as NotePad

AuDisk MakeLog Configuration

The output file created by NM5 requires the MAKELOG.EXE program accompanying AuDisk. This MAKELOG.EXE program must be configured to read the NM5 text file as described in the AuDisk user manual. In the MAKELOG.EXE configuration, designate the following columns:

Log time (hour) begins in column	11
Audio File # begins in column:	19
Also look in column #:	0
End of StopSet detection method:	0
Date Format:	1

Then when you run MAKELOG.EXE it should import and merge the Music Log with your existing Traffic log for the same date.

Also see

[Using ClockText on Format Clocks to Send Commands to Automation](#)

Enco:DAD™ Automation Log

Note: The log file created by Natural Music can only be imported into the Enco DAD system using a "custom filter / merger" purchased (as an optional add-on) from Enco. Users of Enco DADPro32 released after Feb 2003 have the ability to import an ASCII Flat File from Natural Music that does not require the purchase of a custom filter from Enco [See **Enco DADPro32 Automation Log** in this manual]. Users of older versions of EncoDAD must buy the custom filter from Enco.

Automation Logs are created in the Music Log Editor. At the Natural Music main screen, select **[Logs]**. Select an existing Music Log and then click **[Open]**. In the Music Log Editor, click **[Automation Log]** to create the Automation Log

EncoDAD Automation Music Log FileName

The Music log for EncoDAD automation system is **mmddyM#.TXT** where

- mm = Month ## left zero-padded
- dd = Day ## left zero padded
- yr = Year ## (95 for 1995, 01 for 2001)
- M = Music schedule (T is Traffic schedule)
- # = station number (usually 1 or 2)

Example: The Natural Music output file for **Enco:DAD** for 03-28-92 for station 1 (or the only station) is 032892M1.TXT. This file can be viewed with a text editor such as NotePad.

Enco:DAD Music Log File Format

The Enco:DAD automation log does NOT use the generic Natural Music format. Instead it uses the format shown below. The following information will be used by Enco to configure their module which reads our Music Log. This is an ASCII text file.

Start	Length	Field Identification
1	8	Scheduled [Military] Time formatted as hh:mm:ss
10	8	CD or Audio FileName
18	1	Start Code (<u>S</u> egue <u>L</u> oad, etc)
20	24	Song Title
45	4	Length in seconds #####
50	24	Artist names(s)
74	2	Intro time [may be blank]
77	2	Not Used
79	2	Carriage Return / Line Feed

Special Enco:DAD Command Markers

When using the Enco:DAD automation system, a single-digit command is inserted into column 18 in the text log file described above. This is a "command marker" to tell the Enco:DAD how to start the referenced event. The default setting it is to Segue from the previous event. To get Natural Music to insert these one-letter codes, you must include the following commands as needed in the "Clock Text" column at the appropriate places on your clocks.

- **&SEGUE** in the "Text" column of your Format Clock causes the following song(s) to be played without stopping until another **&** marker is encountered. Each clock hour must begin with **&SEGUE**.

(Continued next page)

Enco:DAD™ Automation Log (cont)

Sometimes you may need to "Stop" the Enco:DAD system to do a live break or some other event. This is accomplished by changing the "command marker" for that event:

- **&LOAD** in the "Text" column of your Format Clock causes the following song(s) to be loaded but not started until a signal is given to the Enco:DAD to begin the audio playback.
- **&AUTOPLAY** in the "Text" column of your Format Clock causes the following song(s) to be loaded but not started until a signal is given to the Enco:DAD to begin the audio playback.
- **&NORMAL** in the "Text" column of your Format Clock switches the Enco:DAD into "Normal" mode.

Once the command is set, it is sent for each event until changed! If you change the command to **Load**, it will remain Load and be sent as **L** for all events until you enter another command.

Also see

[Using ClockText on Format Clocks to Send Commands to Automation](#)

Enco:DAD Pro32™ Automation Log

Users of Enco DADPro32 released after January 2003 have the ability to import an ASCII Flat File from Natural Music that does not require the purchase of a custom filter from Enco. NM5 creates a text file that can be imported using Enco's "ASCII Flat File" import as described in section 5.16 of the Enco DADPro32 manual. Users of older versions of EncoDAD must buy the custom filter from Enco and see [Interfacing to Enco:DAD](#).

Note: Effective with version 5.0.209 of Natural Music, the "**Multi-Library**" version of Enco DADPro is supported. There is a completely separate output log from Natural Music for this purpose labeled as "Enco DAD MULTI-LIBRARY". For songs scheduled from Natural Music you need to specify the "Library Location and Name" in NM5's SOURCE2 field for each song. For example if the cut comes from library on drive "E:" named "CUTS" you'd enter "E:CUTS" in SOURCE2. This only applies if you are using "Multiple-Libraries" in Enco DAD.

Automation Logs are created in the Music Log Editor. At the Natural Music main screen, select **[Logs]**. Select an existing Music Log and then click **[Open]**. In the Music Log Editor, click **[Automation Log]** to create the Automation Log

EncoDADPro32 Automation Music Log FileName

The Music log for EncoDAD automation system is **mmddyM#.LOG** where

- mm = Month ## left zero-padded
- dd = Day ## left zero padded
- yr = Year ## (95 for 1995, 01 for 2001)
- M = Music schedule (T is Traffic schedule)
- # = the Natural Music station number if any (may be blank). This is used if you have more than one station and want to assign unique log names for each station. See [Station Setup](#)

Example: The Natural Music output file for **Enco:DADPro32** for 03-28-92 for station 1 (or the only station) is 032892M1.LOG. This file can be viewed with a text editor such as NotePad.

Special Enco DADPro32 Transition Codes

When using the Enco:DADPro32 automation system, a single-digit Transition code is inserted into the log record that tells the Enco DADPro32 how to start the referenced event. The default setting it is to **Segue** from the previous event. To get Natural Music to insert these one-letter codes, you must include the following commands as needed in the "Clock Text" column at the appropriate places on your clocks.

- **&SEGUE** in the "Text" column of your Format Clock causes the following song(s) to be played without stopping until another **&** marker is encountered. Each clock hour must begin with **&SEGUE**.

Sometimes you may need to "Stop" the system to do a live break or some other event. This is accomplished by changing the "command marker" for that event:

- **&LOAD** in the "Text" column of your Format Clock causes the following song(s) to be loaded but not started until a signal is given to the Enco:DAD to begin the audio playback.
- **&AUTOPLAY** in the "Text" column of your Format Clock causes the following song(s) to be loaded but not started until a signal is given to the Enco:DAD to begin the audio playback.
- **&NORMAL** in the "Text" column of your Format Clock switches the Enco:DAD into "Normal" mode.

Once the command is set, it is sent for each event until changed! If you change the command to **Load**, it will remain Load and be sent as **L** for all events until you enter another command.

Enco:DAD Pro32™ Automation Log

Special Enco DADPro32 Commands

Sometimes you may need to send other commands to DADPro32. This is accomplished using the "Text" column of the NM5 clocks. These items are defined in the Enco DADPro32 manual so they are not redefined here. Be sure to put one space between the right bracket] and the text description which is required.

Enco

Command	Transition Code	NM5 Clock Text
Hard Branch	[A]utoplay	&[T,A] Hard Branch
Hard Branch Fwd	[A]utoplay	&[T,A] Hard Branch Fwd Only
Hard Branch	Auto[L]oad	&[T,L] Hard Branch
Soft Branch	[A]utoplay	&[T,A] Soft Branch
Soft Branch Fwd	[A]utoplay	&[T,A] Soft Branch Fwd Only
Soft Branch	Auto[L]oad	&[T,L] Soft Branch
Chain	[A]utoPlay	&[H,A] Name of Playlist
Chain	Auto[L]oad	&[H,L] Name of Playlist
Execute Event	[A]utoPlay	&[E,A] DCL Command
Execute Event	Auto[L]oad	&[E,L] DCL Command
Delay Event	[A]utoPlay	&[D,A] ##### seconds
Rotate Event	[A]utoPlay	&[R,A] Auxiliary PlayList
Rotate Event	Auto[L]oad	&[R,L] Auxiliary PlayList
TAMS Event	[A]utoPlay	&[A,A] TAMS Style
TAMS Event	Auto[L]oad	&[A,L] TAMS Style
Timed Event		&[T] Timed Event
Backtime Marker		&[B] Backtime Marker
AutoFill Start Event		&[F] AutoFill Start ##### seconds
AutoFill End Event		&[F] AutoFill End
Comment		&[C] Any comment text up to 35 characters

To play a specific audio cut put the cut number in place of ##### below:

Command	Transition Code	NM5 Clock Text
Play Audio	[S]egue	&[P,S] #####
Play Audio	[A]utoPlay	&[P,A] #####
Play Audio	Auto[L]oad	&[P,L] #####
Play Audio	[N]ormal	&[P,N] #####

***Note:** Only when using "Enco DAD MULTI-LIBRARY" and you want to play a specific audio cut you need to enter the cut as DRIVE:LIBNAME-CUTNUM. Separate the library name from the cut-number with a dash.

Example: &[P,S] E:CUTS-##### would play a cut from library E:CUTS

EZ-Broadcaster™/EZ-2000™

This section applies to both EZ-Broadcaster and EZ-2000 automation. The output files for the 2 systems ARE different so be sure to select the correct automation system when doing the Music log automation conversion.

Automation Logs are created in the Music Log Editor. At the Natural Music main screen, select **[Logs]**. Select an existing Music Log and then click **[Open]**. In the Music Log Editor, click **[Automation Log]** to create the Automation Log

EZ Broadcaster BreakLog FileName

The combined Traffic/Music log file for this system is the EZ-Broadcaster proprietary file **ddddddd.SPT** where ddddddd is the first 8 letters of the day of the week. This file does not use Natural Music's *Generic Text Log Format* since it uses the proprietary EZ-Broadcaster file format.

Example: The Natural Music output file for EZ-Broadcaster for Sat 03-28-92 is **SATURDAY.SPT**. This file cannot be properly viewed with a text editor such as NotePad. The Natural Music system expects to find the commercial Traffic log with this name already on the disc to which you are sending the music data. The music is inserted into the music "breaks" between the spots.

EZ-2000 BreakLog FileName

The combined Traffic/Music log file for this system is the EZ-2000 proprietary file **ddddddd.EVT** where ddddddd is the first 8 letters of the day of the week. This file does not use Natural Music's *Generic Text Log Format* since it uses the proprietary EZ-2000 file format.

Break Numbers

When using the EZ-Broadcaster/EZ-2000 automation system, the music is sent to the automation in "breaks" of up to 10 songs.

- Your traffic log is also sent in "breaks" of up to 10 spots each.
- You have a total of 10 of these "breaks" per hour to hold your music and spots. You therefore need to be sure your traffic system and music system use different "breaks" in each hour.
- You need to designate which "break number" the songs should be inserted into. A convenient way to do this is to use odd breaks (1,3,5,7,9) for spots, and even breaks (2,4,6,8,10) for music, or vice versa.

Break Numbers as Clock Text

To designate music "break numbers", use the **[Setup][Clocks]** section of Natural Music. Usually, you can just put the "break markers" where your each music "break" or "set" begins on your clock. You must use **&BREAK** followed by a number as the Clock Text to designate a break number for EZ-Broadcaster/EZ-2000 use. Each Hour Must Begin with a Break Marker! Also see [Using ClockText on Format Clocks to Send Commands to Automation](#)

EZ-Broadcaster™/EZ-2000 Source Restrictions

EZ-Broadcaster uses a Cut Number from 0001 to 9999 to identify music cuts. EZ-2000 uses a Cut ID of 1 to 7 letters and/or numbers to identify music cuts. Be sure to put a valid cut ID in the [Source](#) entry field in Natural Music. This is the field that will be sent to EZ-Broadcaster/EZ2000 to tell it to play this Audio Cut

AudioVault AV-Air™ Automation Log

- **AudioVault AV-Air**
- **AudioVault AV-Air Long CutID's** [cutID's greater than 8 characters]
- **AudioVault AV-Air Schedule Build** in AV-Air with clocks built from NM5 log export

Automation Logs are created in the Music Log Editor. At the Natural Music main screen, select **[Logs]**. Select a Music Log and click **[Open]** then **[Convert-Log][Automation Log]**.

Automation Music Log FileName

The Music file for these systems is **mmddy.NM#** where

mm = Month ## left zero-padded **dd** = Day ## left zero padded **yr** = Year##
NM = Music schedule (T is Traffic schedule) **#** = station number (usually 1 or 2)

Example: The NM Music Log for AudioVault for 03-28-92 for station 1 is 032892.NM1.

AudioVault Log File Format:

NM5 AudioVault logs [except **AudioVault Schedule Build** which uses the prescribed AudioVault format] use the Natural Music Generic Text Automation Log Format extended to 82 characters to include the AudioVault 3-letter commands in columns 80-82. (See AudioVault Commands below)

If you select the normal **AudioVault Av-Air** automation log type, the cutID's [NM5 Sources] are limited to 8 characters and will appear in column 10 through 18 of the text record. If you select **AudioVault AV-Air LONG CutID's** as the automation log type, the cutID's [NM5 Sources] are placed starting at column 84 and are unlimited in length.

Configuring the Reader

[Except for **AudioVault Schedule Build**] AudioVault uses AV Scheduler to read the music data from this file. You need to have Broadcast Electronics assist you in configuring their reader program to read this ASCII Text file. You can provide a sample file or just the description of the file format as listed in the Generic Text Automation Log Format section of this manual.

AudioVault Commands

Natural Music can include the 3-letter commands AUD, BRK, UPD, VTK, CMD, & LMS to AudioVault by inserting the command within brackets in the ClockText column of the clock. You must begin the Clocktext with & and may include the length in braces {}.

Command descriptions: **AUD**=Audio **BRK**=Break **VTK**=Voice Track
UPD=Update **CMD**=Command **LMS**=Line Message Svc

Examples:

- &6000 [AUD] Some Text** sends 6000 the CutID, AUD as command , "Some Text" as description.
- &UPDATE [UPD] Some Text** sends UPDATE as the CutID, UPD as command , "Some Text" as description.
- &TRACK [TRK] Some Text** sends TRACK as the CutID, TRK as command , "Some Text" as description.
- &BREAK [BRK] Some Text {2:00}** sends BREAK as the CutID [if you want no cutID, leave a space after the &], "Some Text" as description, BRK as command, and length 2:00.
- & [LMS] Some text** Sends blank CutID if you put a space after &, LMS as command, "Some Text" as description.

Also see Using ClockText on Format Clocks to Send Commands to Automation

RDS Phantom™ Automation Log

Automation Logs are created in the Music Log Editor. At the Natural Music main screen, select **[Logs]**. Select an existing Music Log and then click **[Open]**. In the Music Log Editor, click **[Automation Log]** to create the Automation Log

RDS Phantom Music Log File

The Music file for uses the RDS Phantom uses the RDS proprietary format. The log name is **\$\$mddy.MUS** where

- \$\$ is either **AM** or **FM**
- mm = Month ## left zero-padded
- dd = Day ## left zero padded
- yr = Year ## (95 for 1995, 01 for 2001)

Example: The Natural Music output file for the RDS Phantom for the AM station is 03-28-92 is AM032892.MUS. This file can be viewed with a text editor such as NotePad.

Slot-by-Slot Loading

The Natural Music song list is loaded by RDS Phantom into each hour slot-by-slot into Music avails set up in the RDS Phantom clocks. In other words, the first song in the hour is loaded into the first music slot for that hour in RDS Phantom, the second song into the second slot, and so on.

At the top of each hour, RDS Phantom skips any unused songs in the prior hour and starts loading the first song in the new hour as listed in Natural Music's Music Log.

Also see

[Using ClockText on Format Clocks to Send Commands to Automation](#)

Salsa/Systemation™ Automation Log

Automation Logs are created in the Music Log Editor. At the Natural Music main screen, select **[Logs]**. Select an existing Music Log and then click **[Open]**. In the Music Log Editor, click **[Automation Log]** to create the Automation Log

Salsa/Systemation Music Log File

The Music file for the Salsa and Systemation automation uses the Salsa proprietary format. The log name is **IMUSHOUR.DAT**

Sending Automation Commands / Filenames Using Clock Text When using automation, it is sometimes necessary to send command codes to the automation, such as source switching, playing jingles, legal ID's, etc. Usually the traffic system handles this, but here may be a need to send some command codes through the Music System. This is done in Natural Music by entering **TEXT** on the Clock Setup at whatever point you need the command to occur. You indicate to Natural Music that this is a command to be sent to the automation by preceding it with **&**.

- Be sure to start with the **&**
- When using the Clock Text column for Salsa, always put the 3-letter Salsa category such as MUS, a comma or space, the Salsa Source, a comma or space, the Salsa slot (always 00 for hard disc audio), a comma or space, then the Salsa Cut number.

Example 1: To tell Salsa to play Hard Disc cut named 1234 from the Salsa MUS category, Salsa Source 01, leave the clock Music Category column blank, and put **&MUS,01,00,1234** in the Clock Text column. You may use commas or spaces between the elements.

Example 2: To tell Salsa to execute an AX1 command from Salsa Source 3 , cut 0001, leave the Music Category column blank, and put **&AX1,03,00,0001** in the Clock Text column. You may use commas or spaces between the elements.

Salsa/Systemation Source Restrictions

Natural Music uses the "Source" field to hold the "cut number" for Salsa/Systemation. Salsa/Systemation ALSO needs its own "Source" number which is a 2 digit number indicating the location of the audio cut. Salsa/Systemation uses this to locate the audio cut.

In Natural Music, place the Salsa Source and Salsa Cut Number in the Natural Music Source field formatted as **ss-tttt** where **ss** is the 2-digit Salsa Source, and **tttt** is the 4 digit Salsa Cut number.

Maestro™ / DCS™ Automation Log

Automation Logs are created in the Music Log Editor. At the Natural Music main screen, select **[Logs]**. Select an existing Music Log and then click **[Open]**. In the Music Log Editor, click **[Automation Log]** to create the Automation Log

Note: To the best of our knowledge this automation file works with the older DCS system as well as the newer Maestro.

DCS/Maestro Music Log File

The LogMerge program provided by Computer Concepts is required to import and merge logs for DCS/Maestro. Natural Software cannot assist in configuring or troubleshooting the LogMerge program for you. However, in LogMerge you must select "MusicPro™" as the music log type, as that is the log type created by NM5 when sending the log to the LogMerge program.

The log name is **mmddy.ASC** where

- mm = Month ## left zero-padded
- dd = Day ## left zero padded
- yr = Year ## (95 for 1995, 01 for 2001)

Example: The Natural Music output file for the DCS for 03-28-92 is 032892.ASC. This file can be viewed with a text editor such as NotePad.

Sending Automation Commands / Filenames Using Clock Text

When using automation, it is sometimes necessary to send command codes to the automation, such as source switching, playing jingles, legal ID's, etc. Usually the traffic system handles this, but here may be a need to send some command codes through the Music System. This is done in Natural Music by entering **TEXT** on the Clock Setup at whatever point you need the command to occur. You indicate to Natural Music that this is a command to be sent to the automation by preceding it with **&DCS_** followed by the Directive, Note, Pgm, etc. that should be executed. You should see your Maestro LogMerge program help file for more detailed information. Examples of the most commonly-used DCS commands are shown below. These items are placed by themselves in the Clock text column of NM5 clocks. **Hour markers and traffic merge markers are required and there must be 24 clocks in each day, even if some clocks only have the &DCS_HR command below.**

&DCS_HR

Required as the first event in every hour clock. There must be a clock for every hour with at least this one command in each hour.

&DCS_VOICE_TRACK??

Required as the first event in every automated hour clock. Note: ?? should be replaced with the DCS/Maestro Voice ## for that hour.

&DCS_TRAFFIC_MERGE??

Required to mark the locations in which the DCS LogMerge program may insert items from the traffic log. ?? is the minute value in the hour that the break begins. Note there is a single blank space between TRAFFIC and MERGE but no spaces between MERGE and ??.

&DCS_CART_VT_????_MMSS

Plays an individual cut number specified by ?????. MMSS is the length in minutes and seconds.

DCS Commands continued on Next page

Maestro™ / DCS™ Automation Log [cont]

&DCS_DIRECTIVE_LR_mm_nnss_DESCRIPTION

Load directive where LR=type of DCS load directive either LR [load break] or LP [load and play break]. mm = minute value in hour where directive should occur. nnss is the length in nn minutes and ss seconds. DESCRIPTION is descriptive text only. "Time approximate" can be used by placing a ~ characters as the first element in the description, "time update" by placing \$ as the first character in description.

&DCS_DIRECTIVE_LW_mm_rr00_DESCRIPTION

Load window directive where mm = minute value in the hour the directive is to occur. rr = relay number, for SetVoice use 99. For SetVoice, use \$xx in the description where xx = the voice number. For other Windows use \$xxxx where xxxx is the appropriate value for the window. Refer to your DCS or Maestro manual.

&DCS_FUNCTION_??_mm_DESCRIPTION

DCS User function directive WHERE ?? = DCS function number, mm= minute value in hour at which function is to be executed.

&DCS_LN_DESCRIPTION

Log Note where Description is replaced with the text to be sent as a log note.

Maestro™ / DCS™ Source Restrictions

Computer Concepts' DCS uses a Cut Number from 0001 to 9999 to identify music cuts. You may put letters in the cut numbers but may not exceed 4 characters.

Example: M001 is OK.

Be sure to put a valid DCS cut ID in the Source entry field in Natural Music. This is the field that will be sent to DCS to tell it to play this Audio Cut.

SmartCaster™ Automation Log

Automation Logs are created in the Music Log Editor. At the Natural Music main screen, select **[Logs]**. Select an existing Music Log and then click **[Open]**. In the Music Log Editor, click **[Automation Log]** to create the Automation Log

SmartCaster BreakLog FileName

The combined Traffic/Music log file for this system is the SmartCaster proprietary file **BREAKLOG.day** where day is the 3-letter day-of-week. This file does not use Natural Music's *Generic Text Log Format* since it uses the proprietary Smartcaster file format.

Example: The Natural Music output file for SmartCaster for Sat 03-28-92 is **BREAKLOG.SAT**. This file cannot be properly viewed with a text editor such as NotePad. The Natural Music system expects to find the commercial Traffic log with this name already on the disc to which you are sending the music data. The scheduled songs are inserted into the designated music "breaks" between the spots.

Break Numbers

When using the Smartcaster automation system, the music is sent to the automation in "breaks" of up to 10 songs.

- Your traffic log is also sent in "breaks" of up to 10 spots each.
- You have a total of 12 of these "breaks" per hour to hold your music and spots. You therefore need to be sure your traffic system and music system use different "breaks" in each hour.
- You need to designate which "break number" the songs should be inserted into. A convenient way to do this is to use odd breaks (1,3,5,7,9,11) for spots, and even breaks (2,4,6,8,10,12) for music, or vice versa.

Break Numbers as Clock Text

To designate music "break numbers", use the **[Setup][Clocks]** section of Natural Music. Usually, you can just put the "break markers" where your each music "break" or "set" begins on your clock.

- You must use **&BREAK** followed by a number as the Clock Text to designate a break number for Smartcaster use.
- Each Hour Must Begin with a Break Marker!

SmartCaster™ Source Restrictions

SmartCaster uses a Cut Identifier which consists of 5 digits of a combination of numbers and/or letters. Be sure to put a valid SmartCaster cut ID in the Source entry field in Natural Music. Natural Music. This is the field that will be sent to Smartcaster to tell it to play this Audio Cut.

Also see

Using ClockText on Format Clocks to Send Commands to Automation

Automation Errors for SmartCaster Automation systems

AutoMate™ Automation Log

Automation Logs are created in the Music Log Editor. At the Natural Music main screen, select **[Logs]**. Select an existing Music Log and then click **[Open]**. In the Music Log Editor, click **[Automation Log]** to create the Automation Log

AutoMate Pick-List FileName

The combined Traffic/Music log file for this system is a proprietary format and does not use Natural Music's *Generic Text Log Format*. This log files is named mmddy.TPP where

- mm = Month ## left zero-padded
- dd = Day ## left zero padded
- yr = Year ## (95 for 1995, 01 for 2001)

Example: Music Log for 03-28-92 is 032992.TPP. This file can be viewed with a text editor such as NotePad.

WARNING: This file must be a merged file containing both commercial data and music data in the order in which the events are to be played.

AutoMate™ Automation Source Restrictions

AutoMate uses a Cut Identifier which consists of up to 6 digits of a combination of numbers and/or letters. Be sure to put a valid AutoMate cut ID in the Source entry field in Natural Music. This is the field that will be sent to Automate to tell it to play this Audio Cut.

Also see

[Using ClockText on Format Clocks to Send Commands to Automation](#)

Digital JukeBox™ Automation Log

Automation Logs are created in the Music Log Editor. At the Natural Music main screen, select **[Logs]**. Select an existing Music Log and then click **[Open]**. In the Music Log Editor, click **[Automation Log]** to create the Automation Log

Digital JukeBox Music Log FileName

The output music log is named **day_MUS.LOG**, where **day** is 3-letter day of week. The day_MUS.LOG file format is a proprietary format of Digital JukeBox and does not use the *Generic Text Log File Format*.

Example: Music Log for Saturday 03-28-92 is SAT_MUS.LOG This file can be viewed with a text editor such as NotePad.

Slot-by-Slot Loading

The Natural Music song list is loaded by Digital JukeBox into each hour slot-by-slot into Music avails set up in the Digital JukeBox clocks. In other words, the first song in the hour is loaded into the first music slot for that hour in Digital JukeBox, the second song into the second slot, and so on.

At the top of each hour, Digital JukeBox skips any unused songs in the prior hour and starts loading the first song in the new hour as listed in Natural Music's Music Log.

Digital JukeBox™ Source Restrictions

Digital JukeBox uses a Cut Number from 1 to 9999 to identify music cuts. Be sure to put a valid Digital JukeBox cut ID in the Source entry field in Natural Music. This is the field that will be sent to Digital JukeBox to tell it to play this Audio Cut

Also see

[Using ClockText on Format Clocks to Send Commands to Automation](#)

ControlReady™ / MusicReady™ / WireReady™ Automation Logs

Automation Logs are created in the Music Log Editor. At the Natural Music main screen, select **[Logs]**. Select an existing Music Log and then click **[Open]**. In the Music Log Editor, click **[Automation Log]** to create the Automation Log

Note: The information presented here applies to all WireReady systems. This includes the Music Ready DOS version and the MusicReady Windows version as well as the newer ControlReady.

ControlReady Log FileName

ControlReady is also known as MusicReady or CartReady which are the same products. The Music log file for ControlReady/MusicReady does use the Natural Music Generic Text Log File Format. The log file is named **mmddyyM#.LOG** where

- mm = Month ## left zero-padded
- dd = Day ## left zero padded
- yr = Year ## (95 for 1995, 01 for 2001)

Example: The Natural Music output file for MusicReady for 03-28-92 for station 1 (or the only station) is 032892M1.TXT.

ControlReady Filter

ControlReady uses a "filter" to read the file created by the Natural Music converter. Consult the ControlReady support department for help in configuring their filter to read this file. Please review Generic Text Log File Format.

Also see

Using ClockText on Format Clocks to Send Commands to Automation

CartWorks™ & CDS32™ Automation

All instructions in this section of the manual refer to Cartworks and Pristine CDS32 which use the same file formats and command structures.

Automation Logs are created in the Music Log Editor. At the Natural Music main screen, select [Logs]. Select an existing Music Log and then click [Open]. In the Music Log Editor, click [Automation Log] to create the Automation Log

CartWorks / CDS32 Music Log FileName

The NM5 log for CartWorks/CDS32 does not use the Natural Music *Generic Text Log Format*. It uses a proprietary comma delimited CartWorks/CDS32 file format named **yymmdd.CWM** where

- mm = Month ## left zero-padded
- dd = Day ## left zero padded
- yr = Year ## (95 for 1995, 01 for 2001)

Example: The Natural Music output file for CartWorks/CDS32 for 03-28-92 is 920328.CWM.

Sending Automation Commands / Filenames Using Clock Text

When using automation, it is sometimes necessary to send command codes to the automation, such as source switching, playing jingles, legal ID's, etc. Usually the traffic system handles this, but here may be a need to send some command codes through the Music System. This is done in Natural Music by entering **TEXT** on the Clock Setup at whatever point you need the command to occur. You indicate to Natural Music that this is a command to be sent to the automation by preceding it with **&**.

Example: To tell CartWorks or CDS32 Automation to play Hard Disc cut named DA1234 from "Category" JIN, leave the Music Category column blank, and put **&JIN-DA1243 {00:07}** in the Clock Text column.

- Be sure to start with the **&**
- When using the Clock Text column for the CartWorks / CDS32 systems, always separate the "Category" and DA number with a dash.
- Everything to the right of **&** up to the first blank space is sent as the audio cut number to be played.
- After the space, you can put a description, but this is not sent to the automation system, only the code up to the first blank is sent.
- After the description you may optionally put the run length within {}. The {} is required!

CartWorks™ & CDS32™ Source Restrictions

CartWorks uses a 'Category' (e.g. MUS, 123, etc) plus a cut number to identify audio cuts so this restricts what you may put in the *Source* field during song data entry:

- Place the DA##### in the Source entry field.
- Place the CartWorks /CDS32 *Category* in the Source2 field.

Category here is NOT the music Natural Music Category but the *Category* of the audio cut as designated in the CartWorks / CDS32 systems.

MediaTouch™ Automation Log

Note: The log file created by Natural Music can only be imported into MediaTouch automation products using the "Log Tools" custom filter / merger purchased (as an optional add-on) from MediaTouch.

Automation Logs are created in the Music Log Editor. At the Natural Music main screen, select [Logs]. Select an existing Music Log and then click [Open]. In the Music Log Editor, click [Automation Log] to create the Automation Log

MediaTouch Music Log FileName

The **MediaTouch** music file does not use the *Generic Text Log File Format*. The log file is named **yymdd.SEL** where

- mm = Month ## left zero-padded
- dd = Day ## left zero padded
- yr = Year ## (95 for 1995, 01 for 2001)

Example: The Natural Music output file for MediaTouch for 03-28-92 is 920328.SEL.

Sending Automation Commands / Filenames Using Clock Text

When using automation, it is sometimes necessary to send command codes to the automation, such as source switching, playing jingles, legal ID's, etc. Usually the traffic system handles this, but here may be a need to send some command codes through the Music System. This is done in Natural Music by entering **TEXT** on the Clock Setup at whatever point you need the command to occur. You indicate to Natural Music that this is a command to be sent to the automation by preceding it with **&**. To indicate a length include it as {mm:ss}. The {mm:ss} will be stripped out by Natural Music during log generation and just the MediaTouch commands will be sent to the automation. See Pages 32-34 of the MediaTouch LogTools User Guide for the actual text strings to be used after the &L or &S.

&L followed by any MediaTouch command string is sent to MediaTouch as a LogNote.

&S followed by the proper MediaTouch StopSet string is sent to MediaTouch as a StopSet.

Examples of Clock Text to send commands to MediaTouch:

&L:C:LIN:ZM1000 "Liner Station ID" {:10}	tells MediaTouch to play Liner ZM1000
&L:C:PSA:ZM1000 "PSA" {:10}	tells MediaTouch to play PSA ZM1000
&S:P @M20:00 "Stopset Catcher" {2:00}	send a 2:00 Stopset to MediaTouch

Be sure to include the {mm:ss} length. The {mm:ss} is stripped out by Natural Music before the text is sent to MediaTouch.

MediaTouch™ Source Restrictions

MediaTouch uses a 'Category' (e.g. MUS, MTC, etc) plus a cut number to identify audio cuts so this restricts what you may put in the *Source* field during song data entry:

- Place the audio cut ##### in the Source entry field.
- Place the MediaTouch *Category* in the Source2 field.

Category here is NOT the music Natural Music Category but the *Category* of the audio cut as designated in the MediaTouch system.

DRS2006™ Automation Log

Because of changes in the requirements of the DRS2006 interfacing system and the fact that there are no licensed NM5 users using this interface, it has been discontinued effective with NM5 version 5.0.130. Perhaps DRS can convert the NM5 "Generic ASCII" output log.

Automation Logs are created in the Music Log Editor. At the Natural Music main screen, select [Logs]. Select an existing Music Log and then click [Open]. In the Music Log Editor, click [Automation Log] to create the Automation Log

DRS2006 PlayList Filename

The Music file for DRS2006 does not use the Natural Music *Generic Text Log Format* since it uses another position-dependent text file format as described below. The log file is named **mmddyM#.LOG** where

- mm = Month ## left zero-padded
- dd = Day ## left zero padded
- yr = Year ## (95 for 1995, 01 for 2001)
- M = means Music Log
- # = the Natural Music station number if any (may be blank). This is used if you have more than one station and want to assign unique log names for each station. See [Station Setup](#)

Example: The NM5 output file for DRS2006 for 03-28-92 for station one is 032892M1.LOG

Setting the DRS2006 structure settings for Playlist Import

In the DRS2006 [PlayList Editor] section click on [Import PlayList] You **must** define and save the "Import Structure" as defined below:

Structure Name	Natural Music
Record Length	79
Start Position Artist	10
End Position Artist	39
Start Position Title	40
End Position Title	69

Be sure to save the structure as a unique name with a .pst extension. Then you can load this structure, click [Load Playlist] to select the playlist to import, and click [Import Playlist].

Sending Automation Commands / Filenames Using Clock Text

When using automation, it is sometimes necessary to send command codes to the automation, such as source switching, playing jingles, legal ID's, etc. Usually the traffic system handles this, but here may be a need to send some command codes through the Music System. This is done in Natural Music by entering **TEXT** on the Clock Setup at whatever point you need the command to occur. You indicate to Natural Music that this is a command to be sent to the automation by preceding it with **&**.

Example: To tell DRS2006 Automation to play a cut for a certain Artist and Title leave the Music Category column blank, and put **&ARTIST-TITLE** in the Clock Text column.

- Be sure to start with the **&**
- When using the Clock Text column for the DRS2006 system, always separate the actual "Artist" and "Title" names with a dash.

Raduga™ Automation Log

Automation Logs are created in the Music Log Editor. At the Natural Music main screen, select **[Logs]**. Select an existing Music Log and then click **[Open]**. In the Music Log Editor, click **[Automation Log]** to create the Automation Log

Raduga PlayList Filename

The Music log for Raduga does not use the Natural Music *Generic Text Log Format* since it uses another position-dependent text file format as described below. The log file is named **yyyymmdd.ALB** where

- yyyy= Year ####
- mm = Month ## left zero-padded
- dd = Day ## left zero padded

Example: The Natural Music output file for Raduga for 03-28-92 for is 19920328.ALB

Sending Automation Commands / Filenames Using Clock Text

When using automation, it is sometimes necessary to send command codes to the automation, such as source switching, playing jingles, legal ID's, etc. Usually the traffic system handles this, but here may be a need to send some command codes through the Music System. This is done in Natural Music by entering **TEXT** on the Clock Setup at whatever point you need the command to occur. You indicate to Natural Music that this is a command to be sent to the automation by preceding it with **&**.

Example: To tell Raduga to play a media file leave the Music Category blank on that clock line. Put **&** followed immediately by the complete path and filename in the Clock text column of the NM5 clock. Be sure to start with the **&**.

Importing Data from Raduga Automation

Raduga does not use a database of artist and title information so NM5 cannot directly import Raduga song data. NM5 must read this information from the actual media (audio) files. NM5 assumes your files are named ARTIST - TITLE. When using NM5's data import for Raduga, browse to the folder containing your audio files and select one of the files. When you click **[Import]**, ALL files in the selected folder will be read for Artist-Title info. If they are .WAV files, NM5 will also attempt to read the song length. If you have audio files in more than one folder, run **[Data][Import]** once for each folder.

UDS™ Automation Log

Because there are no licensed NM5 users using this interface, it has been discontinued effective with NM5 version 5.0.130 Perhaps UDS can convert the NM5 "Generic ASCII" output log.

Automation Logs are created in the Music Log Editor. At the Natural Music main screen, select **[Logs]**. Select an existing Music Log and then click **[Open]**. In the Music Log Editor, click **[Automation Log]** to create the Automation Log

See also

[UDS Source Restriction](#)

UDS Music Log Filename

The Music file uses an ASCII file compatible with the log importer of UDS (not the NM5 generic type). The log is named in accordance with the rules for UDS music log importing, such as MONDAY_.UDS for Monday's log.

Sending Automation Commands / Filenames Using Clock Text

When using automation, it is sometimes necessary to send command codes to the automation, such as source switching, playing jingles, legal ID's, etc. This is done in Natural Music by entering **TEXT** on the Clock Setup at whatever point you need the command to occur. You indicate to Natural Music that this is a command to be sent to the automation by entering **&** followed immediately by whatever text you need send to UDS.

The exact format of the text commands needs to be provided by UDS, we have no information regarding the specific text to be entered.

UDS™ Source Restrictions

UDS uses a `source number' plus a cut number to identify audio cuts so this restricts what you may put in the *Source* field during song data entry. This "source number" is determined internally in UDS by how you have configured that system.

- Place the UDS Cut Number in the NM5 Source entry field
- Place the UDS "source number" in the NM5 Source2 field.

Digital Universe™ Automation Log

Automation Logs are created in the Music Log Editor. At the Natural Music main screen, select **[Logs]**. Select an existing Music Log and then click **[Open]**. In the Music Log Editor, click **[Automation Log]** to create the Automation Log

Digital Universe Music Log Filename

The Music file uses an ASCII file compatible with the log importer of Digital Universe. The log file is named **mmddy.asc** where

- mm= Month ## left zero-padded
- dd = Day ## left zero padded
- yy= Year ##

Sending Automation Commands / Filenames Using Clock Text

When using automation, it is sometimes necessary to send command codes to the automation, such as source switching, playing jingles, legal ID's, etc. Usually the traffic system handles this, but here may be a need to send some command codes through the Music System. This is done in Natural Music by entering **TEXT** on the Clock Setup at whatever point you need the command to occur. You indicate to Natural Music that this is a command to be sent to the automation by preceding it with **&**.

Example: To tell Digital Universe to play Hard Disc cut named 1234 leave the Music Category column blank, and put **&1243 Jingle** the Clock Text column.

- Be sure to start with the **&**
- Everything to the right of **&** up to the first blank space is sent as the audio cut number to be played.
- After the space, you can put a description, but this is not sent to the automation system, only the code up to the first blank is sent.
- After the description you may optionally put the run length of the item as follows, it must be within {}, **&1243 Jingle {00:07}**
- To make a text "non-category" item "First-In-Set" just append the words **[FirstInSet]** with the brackets at the end of the line.

First-In-Set Markers

If you need to designate an category item on the clock as "First-in-Set" to begin a music set, put the category in the clock category column and then also put **[FirstInSet]** in the clock text column.

Time-Update Markers

If you need to designate an item as a "Time Update" (for example at the top of hour ID), in the NM clock text column put

&[TimeAdjust=W]	Time adjust NOW
&[TimeAdjust=X]	Time adjust NEXT

BTSG Generation-IV™ Automation

Important: This section does NOT apply to BTSG 'AutoMax' users. Automation Logs are created in the Music Log Editor. At the Natural Music main screen, select [Logs]. Select an existing Music Log and then click [Open]. In the Music Log Editor, click [Automation Log] to create the Automation Log. **You must use an import filter provided by BTSG to import this log into the BTSG Gen-IV system.**

BTSG Generation-IV Music Log Filename

The Music file uses an ASCII file compatible with the log importer of BTSG Generation-IV automation. The log file is named **mmddyymm#** where

- mm= Month ## left zero-padded
- dd = Day ## left zero padded
- yyyy= Year #####
- nm indicates Natural Music
- # is the NM station number

Creating a combined Traffic-Music Log File

Natural Music can automatically merge with a traffic log created by our Natural Log traffic program. For this merge to occur, the Natural Log converted automation log must already be in the same folder into which you convert the Natural Music log. If you use another traffic program, BTSG must merge the logs.

BTSG Generation-IV Source Restrictions

BTSG Gen-IV uses a 'Category' up to 4 characters (e.g. MUS, 1234, etc) plus a cut number to identify audio cuts so this restricts what you may put in the *Source* field during song data entry.

- Place the audio cut number (or CutName) in the NM5 Source entry field.
- Place the Gen-IV *Category* in the Source2 field. (not the NM5 "Music Category")

Sending Automation Commands / Filenames Using Clock Text

When using automation, it is sometimes necessary to send command codes to the automation, such as source switching, playing jingles, legal ID's, etc. Usually the traffic system handles this, but here may be a need to send some command codes through the Music System. This is done in Natural Music by entering **TEXT** on the Clock Setup at whatever point you need the command to occur. You indicate to Natural Music that this is a command to be sent to the automation by preceding it with **&**.

Audio Cut Example Assume you want to play a cut named 1002 from category WX before a commercial break. You would enter this as **&WX-1002** in the clock text column. This will work with any of the automation commands, just use the **&** when entering the event name on the Natural Music clock followed by the BTSG category, a dash, then the cut ID, then at least one space and an optional description as shown below.

&WX-1002 AM WEATHER

Rotator Example Assume you want to run a BTSG rotator named LINERS coming out of the break. You could make this entry in the NM5 clock text column on the line after the break: **&ROT-LINERS {:10}**

Network Join Example Assume you want to join a network at the top of the hour for news for 5 minutes. You could make this entry in the NM5 clock as:

&NET-XABC@ {5:00}.

Note the use of NET as the BTSG category and the cut ID is the network ID as specified in BTSG. Note the **@** forces a "hard sync" in BTSG. To make it a "soft sync" use the **#** as in NET-XABC#.

BTSG Gen-IV™ Automation (cont)

Sync Commands

Sync Commands can be sent to BTSG Gen-IV. NM5 reads # as a "soft sync" and @ as a "hard sync". A **soft sync** means BTSG moves to that event at that time but does not start playing it until whatever is currently playing finishes. A **hard sync** means BTSG moves to that event at that time, fades whatever is playing, and immediately plays the event.

Sync Example Assume you want to make sure you do an ID near the top of the hour but you don't want to stop what is playing at the top of the hour. This is a "soft sync" in BTSG Gen-IV. This would sync to the Legal ID at the top of the hour and play it immediately after whatever is playing finishes.

00:00 &ID-LEGALID# {5:00}

Note the # forces a "soft sync" in BTSG. To make it a "hard sync" use the @ and whatever is playing will be faded and this event will begin.

Prophet NexGen™ Automation

You must use an import filter provided by Prophet to import this log into the NexGen system.

Automation Logs are created in the Music Log Editor. At the Natural Music main screen, select **[Logs]**. Select an existing Music Log and then click **[Open]**. In the Music Log Editor, click **[Automation Log]** to create the Automation Log

Prophet NexGen Music Log File

The Music file uses an ASCII file compatible with the log importer of NexGen automation. The log file is named **mmddyym#.log** where

- mm= Month ## left zero-padded
- dd = Day ## left zero padded
- yy= Year ##
- m indicates Natural Music log
- # is the NM station number

Sending Automation Commands / Filenames Using Clock Text

When using automation, it is sometimes necessary to send command codes to the automation, such as source switching, playing jingles, legal ID's, etc. Usually the traffic system handles this, but here may be a need to send some command codes through the Music System. This is done in Natural Music by entering **TEXT** on the Clock Setup at whatever point you need the command to occur. You indicate to Natural Music that this is a command to be sent to the automation by preceding it with **&**.

Audio Cut Example Assume you want to play spot number 001002, cut number 01 from meditype 02 before a commercial break. You would enter this as **&02-001002-001** in the clock text column. This will work with any of the automation commands, just use the **&** when entering the event name on the Natural Music clock followed by a media-type, then the 6-digit spot number, a dash, then the 3-digit cut number, then at least one space and an optional description as shown below. The {0030} indicates it is 30 seconds in length and is optional.

&02-001002-001 AM WEATHER {0030}

Text Example Assume you want to send some text to NexGen to display. You could enter it as follows using media-type 09, a dash, then a blank space, then the text to be displayed.

&09- This text will be displayed

Prophet NexGen™ Source Restrictions

NexGen uses a numbering system that includes a "spot number" from 000001 to 999999 combined with a cut number from 001 to 999. Cut number is almost always 001 for music cuts. In NM5 song entry, enter the **Source** field in this format:

SSSSSS-CCC where **SSSSSS** = 6-digit spot number and **CCC** is a 3-digit cut number [usually 001]

You should enter the NexGen "Media-Type" in the **Source2** field in NM5 song entries.

Configure the Prophet log import filter

All position definitions should be set to position 0 except:

- Description 20 24
- CutNumber 16 3
- SpotNumber 10 6
- LogTime Hour Pos 1
- LogTime Min Pos 4
- Media-Type 74 6

Pristine RapidFire™ Automation

Pristine CDS32 uses the file formats and commands as described in the **CartWorks** section of this manual. See that section if using CDS32!

You must use an import filter provided by Pristine to import this log into the Pristine system.

With the exception of the Sequence Numbers described below, Pristine uses the interface as described in Generic Text Log Format. See that section of this manual.

Sending Automation Commands / Filenames Using Clock Text When using automation, it is sometimes necessary to send command codes to the automation, such as source switching, playing jingles, legal ID's, etc. Usually the traffic system handles this, but here may be a need to send some command codes through the Music System. This is done in Natural Music by entering **TEXT** on the Clock Setup at whatever point you need the command to occur. You indicate to Natural Music that this is a command to be sent to the automation by preceding it with **&**.

Commercial Break Example Assume you want to tell Pristine where to insert Commercial Breaks when it merges the Traffic and Music Logs. You use the Pristine "Sequence Numbers" as follows:

&SEQ#-00
through
&SEG#-09

The 2-digit number at the end designates which commercial break is to be loaded.

Hard Coding an Audio Cut Assume you want to tell Pristine to play an individual audio cut.

&1234 Title, Artist, EndType, Intro, Outro {03:30}

Be sure to put a space between the cut number and the Title. Then put the commas between Title, Artist, EndType, Intro, Outro and be sure to put the length inside the {}. If you do need all the fields, simply put a comma for each empty field up to the one(s) you want to use. After the last field you want to use you do NOT need to put any comma(s).

Myriad™ Automation

You must use an import filter provided by Myriad to import this log into the Myriad system.

Automation Logs are created in the Music Log Editor. At the Natural Music main screen, select **[Logs]**. Select an existing Music Log and then click **[Open]**. In the Music Log Editor, click **[Automation Log]** to create the Automation Log

Myriad Music Log File The Music file uses an ASCII file compatible with the log importer of Myriad automation. The log file is named **mmddyym#.log** where

- mm= Month ## left zero-padded
- dd = Day ## left zero padded
- yy= Year ##
- m indicates Natural Music log
- # is the NM station number

SegueType

Myriad needs a segue type for every item it plays. NM5 always sends segue type **X** to Myriad unless it is told otherwise. To tell NM5 to send another segue type to Myriad, on the NM5 clock in the clock text column put a valid Myriad segue type. See the Myriad manual for the valid segue types.

Example:

Assume you want an item to have segue type **@** for automatic sweep. Put a normal category in the category column of the NM5 clock, then in the text column put **@**

Sending Automation Commands / Filenames Using Clock Text When using automation, it is sometimes necessary to send command codes to the automation, such as source switching, playing jingles, legal ID's, etc. Usually the traffic system handles this, but here may be a need to send some command codes through the Music System. This is done in Natural Music by entering **TEXT** on the Clock Setup at whatever point you need the command to occur. You indicate to Natural Music that this is a command to be sent to the automation by preceding it with **&**.

Sending Audio Cuts from Clock text

&cccc,S,F,Title, Artist,{mm:ss}

where ccccc is the audio cut number

S is Seguetype as described in the Myriad manual X,N,-,Y,@,#,+ [default value is X]

F is Fadeable as described in the Myriad manual F or E [default value is F]

{mm:ss} is the length (optional)... { } must be included!

Audio Cut Example Assume you want to play an audio cut 1002 containing the weather forecast. You would enter this as in the clock text column as shown below. The {0030} indicates it is 30 seconds in length and is optional.

&1002,X,E,Weather,Dave,{00:30}

Continued on next page

Myriad™ Automation (cont)

Setting Commercial Break Markers

&:,S,BREAK XX:MM SPOT SET

: indicates a control code

S is Seguetype as described in the Myriad manual X,N,-,Y [default value is X]

:MM is the minute in the hour the break should occur

Break Example Assume you want to fill a break at :10 after the hour with commercial spots from a traffic scheduler with a seguetype of N. You enter this as show below in the clocktext column in NM5. Be sure to put a single space between BREAK and XX: and between the minutes and the SPOT SET text.

&:,N,BREAK XX:10 SPOT SET

Inserting Myriad Control Codes

&:,S,CONTROL_CODE

: indicates a control code

S is Seguetype as described in the Myriad manual X,N,-,Y [default value is X]

Control_Code is the text of the control code as described in the Myriad manual.

Autofade Example Assume you want to turn on or off Myriad's autofade system until the next hour.

&:,X,\$AON turns AutoFade ON

&:,X,\$AOFF turns AutoFade ON

Disable Songs Example Assume you want to delete all unplayed songs in the hour and skip ahead to the next hour of music.

&:,X,\$D

See your Myriad manual for exact text of control codes. Always start with **&:,segue type**, then whatever control code you need.

BarCode BXC 3™ Automation

You must configure the import filter in the BCX system as described below in order to import this log from Natural Music.

Automation Logs are created in the Music Log Editor. At the Natural Music main screen, select **[Logs]**. Select an existing Music Log and then click **[Open]**. In the Music Log Editor, click **[Automation Log]** to create the Automation Log

BarCode BCX 3 Music Log File The Music file uses an ASCII file compatible with the log importer of BCX 3. The log file is named **yymmddM#.LOG** where

- mm= Month ## left zero-padded
- dd = Day ## left zero padded
- yy= Year ##
- M indicates Natural Music log
- # is the NM station number [if used]

Configuring BarCode BCX-3 Music Playlist Import Settings Set the music playlist import settings for BCX-3 as follows:

	Columns
Trigger	1 to 1
Artist	43 to 72
Title	12 to 41
Dur	74 to 78
FileName	80 to 150

[or at least enough columns to hold your longest filename starting at column 80]

Music Filenames & Source Restrictions You need to put the audio cut filename including its .mp3, .wav extension in the NM5 **Source** file. BarCode BCX-3 uses a "trigger" letter to find the audio cuts to play [in which folder they are saved]. In NM5, put this trigger letter in the **Source2** field for each song entry.

Sending Automation Commands / Filenames Using Clock Text When using automation, it is sometimes necessary to send command codes to the automation, such as source switching, playing jingles, legal ID's, etc. Usually the traffic system handles this, but here may be a need to send some command codes through the Music System. This is done in Natural Music by entering **TEXT** on the Clock Setup at whatever point you need the command to occur. You indicate to Natural Music that this is a command to be sent to the automation by preceding it with **&**.

Audio Cut Example Assume you want to play a cut named 1002.mp3 from BCX-3 "trigger" W before a commercial break. This could be any valid BCX-3 trigger. You would enter this as **&W-1002.mp3** in the clock text column. This will work with any of the automation commands, just use the **&** when entering the event name on the Natural Music clock followed by a valid BCX-3 trigger, a dash, then the cut ID, then at least one space and an optional description as shown below plus the length in braces { } The {00:30} indicates it is 30 seconds in length.

&W-1002 AM WEATHER {00:30}

TuneTracker™ Automation

You must use the TuneStacker to the import music schedule log and to merge it with traffic [commercial log] if needed. Important: For proper interfacing to TuneTracker, the first event in every hour's clock in NM5 must be an hour marker as shown in [Sending Automation Commands / Filenames Using Clock Text](#)

Automation Logs are created in the Music Log Editor. At the Natural Music main screen, select **[Logs]**. Select an existing Music Log and then click **[Open]**. In the Music Log Editor, click **[Automation Log]** to create the Automation Log

TuneTracker Music Log File The Music file uses a TuneTracker-specific file. The log file is named **yymmddM#.LOG** where

- mm= Month ## left zero-padded
- dd = Day ## left zero padded
- yy= Year ##
- M indicates Natural Music log
- # is the NM station number [if used]

Music Filenames & Source Restrictions Because the filenames in TuneTracker can be quite long, including the ennnntire path and filename, you need to put the audio cut filename including its path and any extension in the NM5 **WebAudioSource** field for each song. Natural Music provides its own "Source" number.

Important Note: You can import an AudioList file from TuneTracker that will put all the information in the correct fields. Contact TuneTracker to determine how to get this AudioList from their system. In NM5 simply use **[Data][Import]** select the TuneTracker type and **[Browse]** to the file to be imported.

Sending Automation Commands / Filenames Using Clock Text When using automation, it is sometimes necessary to send command codes to the automation, such as source switching, playing jingles, legal ID's, etc. Usually the traffic system handles this, but here may be a need to send some command codes through the Music System. This is done in Natural Music by entering **TEXT** on the Clock Setup at whatever point you need the command to occur. You indicate to Natural Music that this is a command to be sent to the automation by preceding it with **&**.

Hour Marker Example [The ClockText column for the first event in every clock must be an hour marker as follows:](#) **&[Hour]**

Play Audio Cut Assume you want to play a specific audio cut named **/boot/jingles/Jingle1.mp3** at a specific point in the clock. You should leave the category blank on that clock line, then enter in the clock text column the following text: **&[PLAY] /boot/jingles/Jingle1.mp3**

Set a Commercial Break All commercial breaks must be marked in Natural Music if you are using TuneStacker to merge traffic spots into the music log. This is done by putting the following text in the Clock Text column [again leave the category blank]: **&[BREAK]**
Be sure the time on that line is the same time the break is shown in the commercial [traffic] log.

Other Commands There are a large number of commands you can send from NM5 to the TuneTracker. Contact TuneTracker for the proper syntax. In NM5, enter these commands as follows in the clock text column:

& followed immediately by the command from TuneTracker.
This command usually starts with the **#**

This page intentionally left blank