

Data Backup

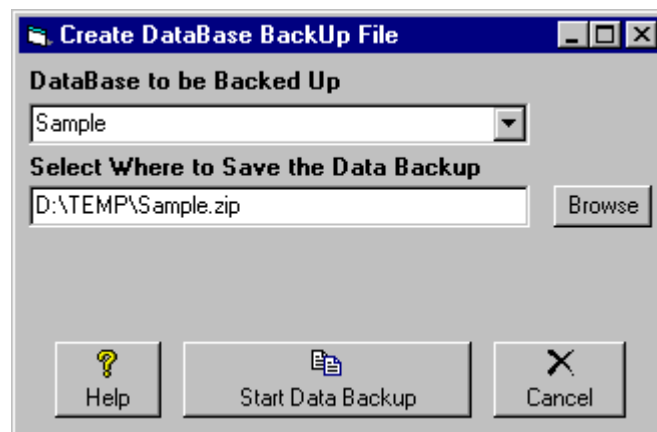
Beware:

- ❑ Your data is valuable! Think of how much time it will take you to manually re-enter all your data!
- ❑ The only protection you have is to do frequent Data-Backups, daily if possible! We cannot recover lost data for you so please do not ask.
- ❑ We recommend that you save Data-Backups to several different discs and locations on a rotating basis. Save these Data-Backup files in separate locations in case a Data-Backup diskette goes bad or there is a fire or natural disaster. **We do not recommend use of floppy discs for data backup because of the large number of discs necessary and the resulting complete loss of your database if even 1 floppy disc has an error or goes bad.**

Data Backup

To begin the Data-Backup, from the Main screen:

- Click **[Data][BackUp]**



- Select the Natural Music Database to be backed up.
- Use the **[Browse]** button to select the destination for the Data-Backup file. You may select any type of removable media such as floppy disc or Zip-Disc™. You may also select to send the Data-Backup file to another computer across a Local Area Network.
- Click **[Start]** to begin.

Natural Music will let you know whether it successfully created the Data-Backup file. Natural Music uses standard pkZip™ data compression to reduce storage requirements for the Data-Backup files.

Special Note for ZipDisc™ Backups Natural Music sees ZipDiscs as "removable" (like floppy discs) and will enable the "multi-volume" support needed to backup large files onto multiple floppy discs. This causes all existing files in the root directory of the ZipDisc to be deleted each time a new backup is done. If you want to backup several Natural Music database files to one ZipDisc, simply create a folder on the ZipDisc and do all backups into that folder instead of the root directory of the ZipDisc. This will prevent existing files on the ZipDisc (those in the folder) from being deleted during the backup of additional databases because the files are not in the root directory.

Data Restore

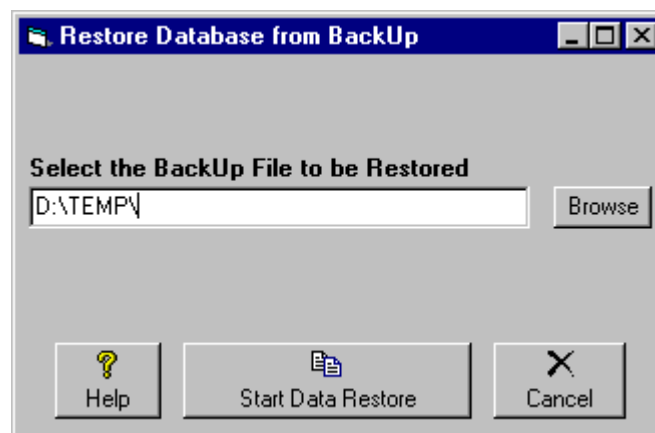
Beware:

- ❑ You should ONLY consider a Data-Restore if your database is hopelessly corrupted.
- ❑ Data-Restore will return your data to its status as of the last Data-Backup date.
- ❑ It will erase any data from the restored database that was entered since the last Data-Backup of that database.

Data-Restore

To begin the Data-Restore, from the Main screen:

- Click **[Data][Restore]**



- Use the **[Browse]** button to select the Data-Backup file to be restored.
- Click **[Start]** to begin the Data-Restore process.

Import Automation Music Database

Natural Music is configured to read audio cut databases from quite a few automation systems as listed in the "Import FileType" dropdown box in the data import window. You don't need to specially configure the import filter for these databases. NM5 can also import from text and delimited files but these import filters will need to be user-configured in NM5.

You may import data anytime you make changes to the automation audio cut library to add songs. NM5 will scan for any new "Sources" (audio file ID's) and add any new entries to the NM5 database. **It is highly recommended that you do a [Data][Backup] before trying to import data into any existing Natural Music database.**

1. Click **[Data][Import]** from the main Natural Music screen.
2. Select the **Import File Type** from the dropdown box. If your specific system is not listed, most systems can provide a database file using Delimited Text or Position-Dependent Text files that can be imported by NM5 as described later in this chapter
3. Click the **[Browse]** button to select the file to be imported and Click **[Open]**
4. If desired, you may check **[Tag NEW Imported Songs]** and any NEW songs imported will be 'Tagged' so you can easily identify them in NM5's Song Browser.
5. Verify data fields are aligned properly (some fields may be blank), then Click **[Import]**

Sample Data Import

Import FileType BSI WaveStation (Audio.mdb) Tag NEW Imported Songs

Import FileName C:\BSI32\audio.mdb

Import Filter Description

Include WaveStation Genre(s)

- Genre is Empty
- Country
- Pop

Include WaveStation Category(s)

- AUDIO

Natural Music Field	Field as Imported
Source	1001-04.wav
Title	Come Monday
Artist1	Jimmy Buffett
Intro	09
Length	00:03:05
Source2	AUDIO
Year	1974
Album	
Composer	J. Buffett
Publisher	ABC/ Dunhill

WaveStation Importing

WaveStation Users

The import filter is automatically configured for WaveStations Audio.MDB file which is usually located in the /BSI32 folder on your WaveStation computer. You may Un-check 'Genre(s)' and/or 'WaveStation Category(s)' you do NOT want to be imported. This is useful if there are items in the library you want to exclude (such as Spots). Just give them a "Spot" genre and un-check it. On the "Additional Fields" tab you can select to import some extra fields such as Simian Category or genre into NM5's Music Category field.

Importing NM5 Music Coding from WaveStation

This section is only important if you want to include gender, tempo, and other NM5 coding into your WaveStation database. Very few users do this, and usually just import the main data such as Title, Artist, etc. from WaveStation and then use NM5 to code the song's gender, tempo, etc.

Some users prefer to code the songs as they are dubbed into WaveStation. NM5 allows you to use the "**AccountExec**" field in the WaveStation database to hold this information. To activate this function, select "**AccountExec = NM5 Category, Gender...**" in the last dropdown box in the "Natural Music Field" entry on the Import screen (see sample on previous page).

Code Entry in the WaveStation AccountExec field

Within the "**AccountExec**" field in WaveStation, you may put NM5 codes. Remember you must:

1. Enter the codes in this EXACT order
2. Separate each code with a comma
3. Put a comma for each field, even if the field is blank, up to the last field you want to use.

Example: If TempoIn and TempoOut are the only fields you wish to enter, use:

,,1,1

The first 2 commas show that Category and Gender are blank.

If you want to enter only the AlsoProtect1ID field, you must use:

,,,,,,,,AA.

The commas are counted by NM5 as blank entries for all fields prior to AlsoProtect1ID to determine that the AA is supposed to be placed in the AlsoProtect1ID field.

The codes must be entered in this order. If any fields are not needed just put a comma with no entry for that field.

- | | | |
|-----|----------------|--------------|
| 1. | Category | [AA-ZZ] |
| 2. | Gender | [M,F,G,D,I] |
| 3. | TempoIn | [1-5] |
| 4. | TempoOut | [1-5] |
| 5. | Intensity | [1-5] |
| 6. | Mood | [1-5] |
| 7. | Style | [A-Z] |
| 8. | Other | [A-Z] |
| 9. | DayPart | [A-Z] |
| 10. | Opener | [blank or Y] |
| 11. | AlsoProtect1ID | [AA-ZZ] |
| 12. | AlsoProtect2ID | [AA-ZZ] |

Scott Studios Importing

Scott Studios Users

The import filter is automatically configured for the Scott Studios SpotDta.ASC file that must be generated from within the Scott Studios system.

WARNING: Scott Studios SS32 version 6 removed the previously-supported convenient means of creating the SpotDta.ASC files. As provided to us by Scott Studios support personnel, here are instructions to create the file from Version 6 and later of Scott Studios SS32. [Natural Software support cannot assist you in creating this file in SS32!]

Import a Purchased Music Library

If you purchase a music library from a vendor listed below, Natural Music can automatically import the data files. You don't need to configure the import filter for these databases. **It is highly recommended that you do a [Data][Backup] before trying to import data into any existing Natural Music database.**

- Click **[Data][Import]** from the main Natural Music screen. Select the **Import File Type** from the dropdown box. If your vendor is not listed, the vendor can usually provide a database file using Comma-Delimited or Position-Dependent text and you will need to configure the Natural Music import filter.
- Click the **[Browse]** button to select the file to be imported.
- Highlight the desired import file and Click **[Open]**
- If desired, you may check **[Tag NEW Imported Songs]** and any NEW songs imported will be 'Tagged' so you can easily identify them in NM5's Song Browser.
- If you'd modify the import filter and want to save the modified settings for future use, click **[Save Filter]** before proceeding. If you save the filter settings, you may reuse the filter by selecting "[Use your SAVED Import Filter---]" from the Import FileType box.
- Verify data fields are aligned properly, and Click **[Import]**

Sample Data Import

Import FileType: TM Century (*.dbf) Tag NEW Imported Songs

Import FileName: D:\TEMP\TestStation\Database.dbf

Import Filter Description

Note: TM Century saves Artists as LastName, FirstName you may save them this way or save them as Firstname, LastName

FirstName LastName
 LastName, FirstName

Natural Music Field	Field as Imported
Source	{SNA
Title	Dixie On My Mind
Artist1	Williams, Jr., Hank
Source2	1000
Intro	:11
Length	2:34
EndType	C
Composer	Williams, Jr.

Import an Existing Music Scheduler

Your existing music scheduler may be able to output an appropriate text file. The best method is to either export the data to a *Delimited-Text file* or a *Position-Dependent-Text file* (if your music scheduler has that capability). Alternatively you can "print" a music list to a text file which will result in a *Position-Dependent-Text file*. You will need to see the one of the following sections of this manual for specific importing details depending on the type of file created by your existing music scheduler.

- **Import a Position-Dependent Text File**
- **Import from a Delimited Text File**

Converting from Natural Music DOS

To import your Natural Music for DOS database into Natural Music 5 for Windows:

- From the Natural Music for Windows Main Screen, click **[Data][Import]**
- Select Natural Music for DOS from the **Import FileType** box.
- Next to the **Import FileName** Box, click **[Browse]** to find the Natural Music DOS File named **NatMus.STP**. This file will be located in the
 - ↳ \NATMUS-1\FILES folder for station 1
 - ↳ \NATMUS-2\FILES folder for station 2
 - ↳ \NATMUS-3\FILES folder for station 3, and so on.
- When you find the NatMus.STP file, click **[Open]**.
- Enter a name for your Natural Music for Windows database and click **[Start]** to convert the Natural Music DOS database into Natural Music 5 for Windows format.

Importing from another NM5 database

You may want to create a new database with all or some of the songs from another Natural Music 5 for Windows database.

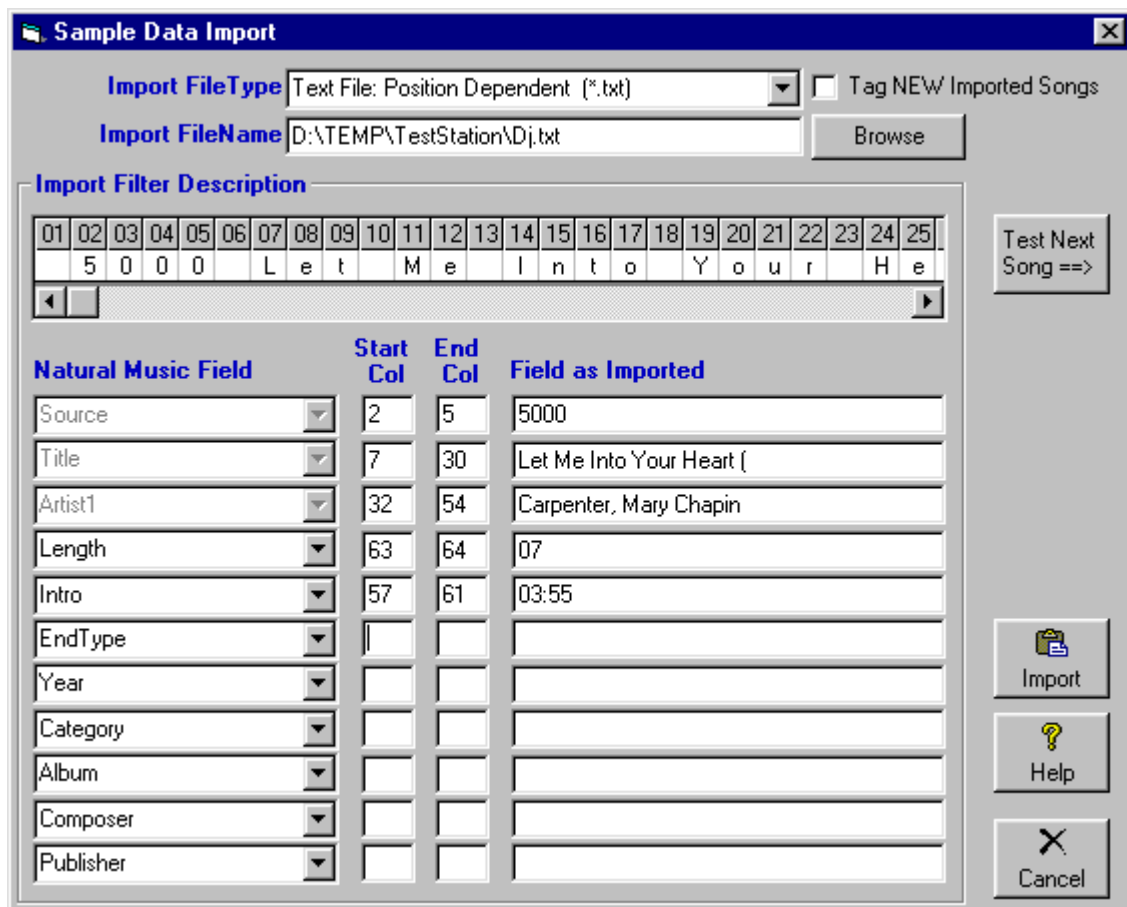
- Select or create a new "Target" station database into which the songs are to be imported.
- Select the **NM5** file type to be imported from the **Import File Type** dropdown box in the **[Data][Import]** section.
- Select the "Source" NM5 database from which songs are to be imported.
- Select all Music Category(s) to be imported.
- Click **[Import]** Any song found in the source database and not found in the target database will be imported. (If the Source field matches in both databases it is considered the same song and will not be duplicated).

Import a Position-Dependent Text File

You will have to configure the import filter only if you select **Position Dependent Text Import Filter** or **Delimited Text Import**. The import filter is automatically configured for all other file types. To import from a Position Dependent Text File, click **[Data][Import]** on the main Natural Music screen.

Configuring Position Dependent Text Import Filter

- Select Position **Dependent Text File** type if the text file to be imported has 1 song per line and the data fields are **not** separated by delimiter characters such as commas or tabs.
- When you open the file, the data for the first song record will be displayed in the grid showing the character in each column of the record.



- To set the import filter, for each row in the table, select the NM5 'Music Field' and tell Natural Music the *starting column* and *ending column* for that row's data field. You may leave fields empty if they are unavailable in your imported data except *Title* and *Artist1* which are required.
- As you set each field, the right column of the table will display the value currently read for that field for verification purposes. You may click **[Test Next Song]** to verify the next song's data.
- If desired, you may check **[Tag NEW Imported Songs]** and any NEW songs imported will be 'Tagged' so you can easily identify them in NM5's Song Browser.
- Click **[Import]** when ready to proceed.

Import from a Delimited Text File

You will have to configure the import filter only if you select **Position Dependent Text Import Filter** or **Delimited Text Import**. The import filter is automatically configured for all other file types. To import from a Position Dependent Text File, click **[Data][Import]** on the main Natural Music screen.

Configuring Delimited Text Import Filter

- Select this file if the file to be imported has each data field separated by a delimiter character such as a comma, tab, or pipe character. This file usually will have a .txt or .csv [comma-separated-value] extension and can be commonly created by database programs.
- When you open the file, the data for the first song record will be displayed in the grid showing the field value in each column of the record.

Sample Data Import

Import FileType: Text File: Comma-Delimited (*.txt *.csv) Tag NEW Imported Songs

Import FileName: D:\TEMP\TestStation\NatMus.csv

Import Filter Description

Column 01	Column 02	Column 03	Column 04
C00304.wav	The Chair	Strait, George	00:02:47

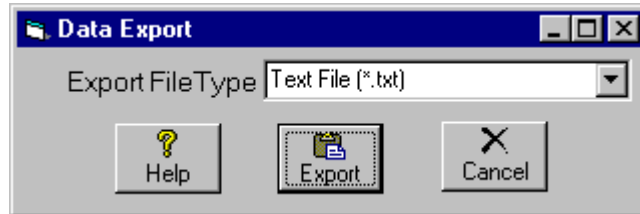
Test Next Song ==>

Natural Music Field	Start Col	Field as Imported
Source	1	C00304.wav
Title	2	The Chair
Artist1	3	Strait, George
Length	4	00:02:47
Intro	8	1985
EndType		
Year		
Category		
Album		
Composer		
Publisher		

- To set the import filter, for each row in the table, select the NM5 'Music Field' and tell Natural Music the record *column* and for that row's data field. You may leave fields empty if they are unavailable in your imported data except *Title* and *Artist* fields are required.
- As you set each field, the right column of the table will display the value currently read for that field for verification purposes. Click **[Test Next Song]** to verify additional song entries.
- If desired, you may check **[Tag NEW Imported Songs]** and any NEW songs imported will be 'Tagged' so you can easily identify them in NM5's Song Browser. Click **[Import]** when ready to proceed.

Export Natural Music Database

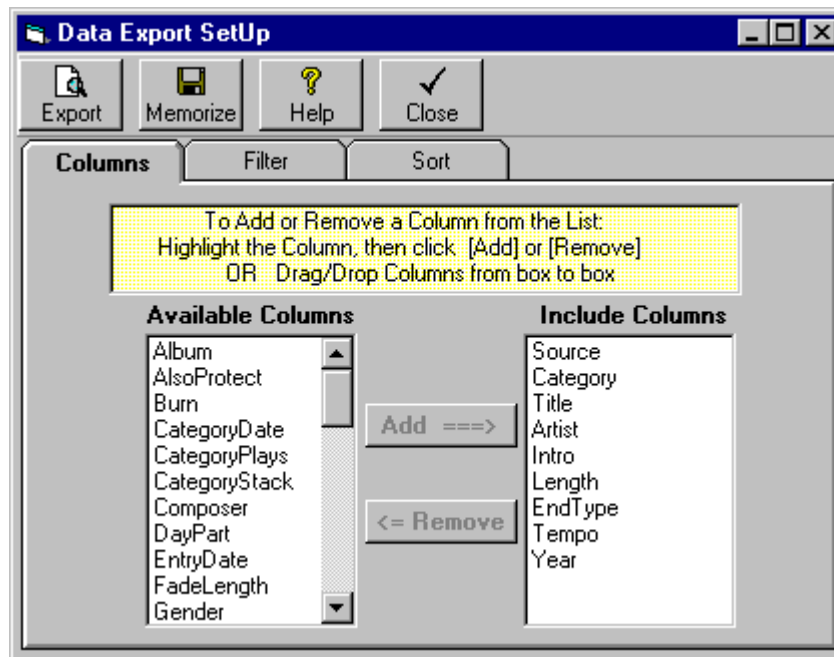
You may have a need to export your song list to another software program such as a database or spreadsheet program. To begin this process from the Main screen click **[Data][Export]**. Natural Music can export to the following file types:



- Text File See [Selecting Output File Type](#)
- [AXS MusMgr.DTA](#) [for the Scott Studios AXS Automation]

Text File

Select Text File and click **[Export]**, you will be shown a design screen where you can design the data export file.



- Select the columns to be exported
- Set any filtering to exclude certain songs
- Set how the export file is sorted

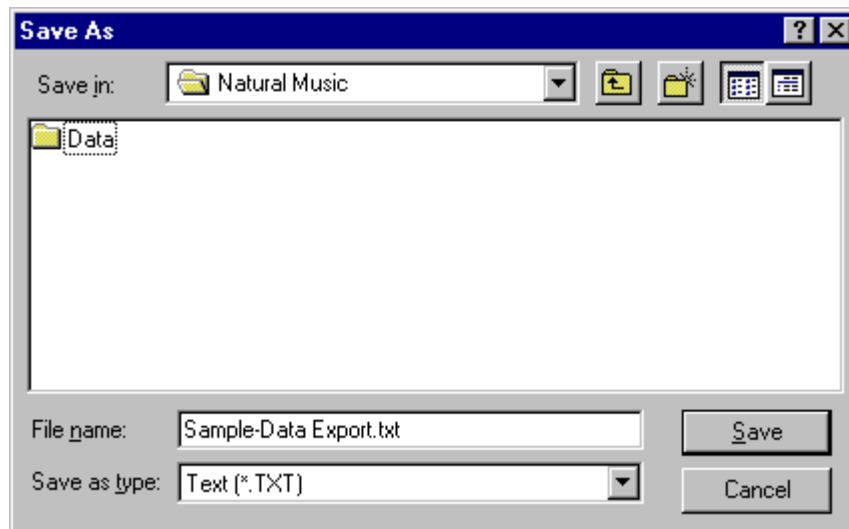
Export

After making the design selections on the Data Export Design screen, click **[Export]** to preview the data export. On the Preview screen, you can drag the column boundaries to expand or contract the column widths. When done setting the column widths click **[Export]** on the Preview screen.

Export Natural Music Database(cont)

Selecting Output Text File Type

When exporting the Natural Music database to a **Text File**, you may select the type of text file to be exported from the **Save-As-Type** dropdown box on the file selection screen. You may also designate the file name to be given to the output text file.



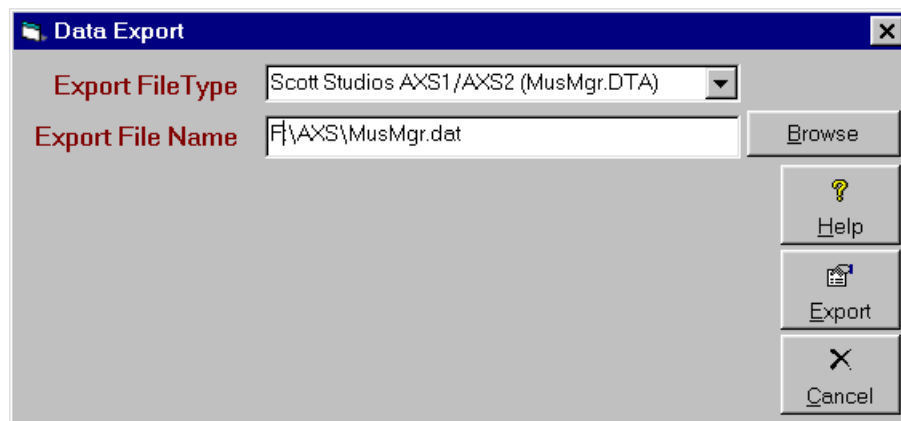
- **Text** - This is the normal text without commas or delimiters between columns.
- **Comma-Delimited Text** - This will write a file with commas between the columns. This is the most common type of file used to import into other database or spreadsheet programs.
- **Tab-Delimited Text** - This will write a file with tab characters between the columns.
- **Pipe-Delimited Text** - This will write a file with pipe | characters between the columns.

Export to AXS MusMgr.dta

Note: This section applies only to the older versions of AXS prior to AXS-3.

AXS MusMgr.DTA If you are using AXS, you can export your song list to the AXS MusMgr.DTA file. This file allows DJ's to use AXS to search for specific songs, artists, and song lengths.

If you wish to export to the AXS MusMgr.DTA, from the Main Screen click **[Data][Export]**. Then from the Data Export Screen:



- Select the AXS MusMgr.DTA as the output file type
- Click **[Export]**
- Select the path to the AXS MusMgr.DTA file.



This export to AXS process may take awhile, as several index files are also created during the process. This process may be performed while AXS is on the air.

Database Repair

Not all database corruption problems can be repaired so it is still vitally important that you do frequent Data Backups!

Corrupted Database

When you attempt to open or compact a database which has been corrupted, a run-time error usually occurs. In some situations, however, a corrupted database may not be detected, and no error occurs, but the database acts oddly. Database corruption can occur if:

- The Natural Music program is closed unexpectedly because of a power outage or computer hardware problem,
- Microsoft Windows doesn't have a chance to write data caches to disk because it freezes or is restarted in a hard reboot.
- In MultiUser LAN environments, if the network connection is prematurely terminated.

Avoid DataBase Corruption

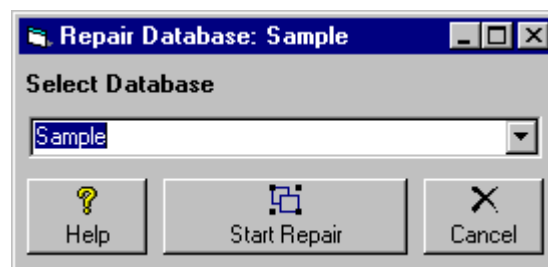
To avoid corrupt databases, always do a normal exit from Natural Music. In some cases, power supplies that can't be interrupted may be necessary to prevent accidental data loss during power fluctuations.

Database Repair

This function attempts to repair a database that was marked as possibly corrupt by an incomplete write operation or other problems with your hardware or operating system.

- The Data Repair function attempts to validate all system tables and all indexes.
- **Any data that can't be repaired is discarded.**
- If the database can't be repaired, a run-time error occurs.
- After repairing a database, it's also a good idea to compact the database using the **[Database Utilities][Compact Database]** function method to defragment the file and to recover disk space.

To begin Data Repair, click **[Data][Database Utilitites][Repair Database]** from the main Natural Music screen and select the Database to be repaired.

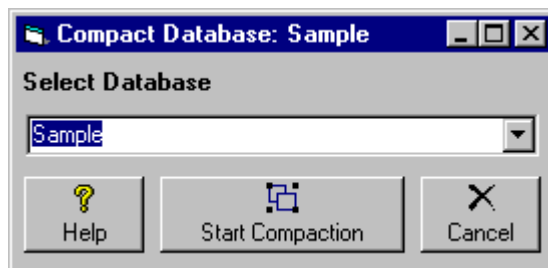


Compact Database

It is vitally important that you do a Data Backup before doing this Compact Database function in case something goes wrong during this process!

Compact Database

After many data operations such as deleting songs and play histories, the Natural Music database may become rather large and fragmented. This can cause database performance to become markedly slower. You may want to occasionally use the **[Data][Database Utilities][Compact Database]** function from the main Natural Music screen to defragment the file and to recover disk space.



This page intentionally left blank